

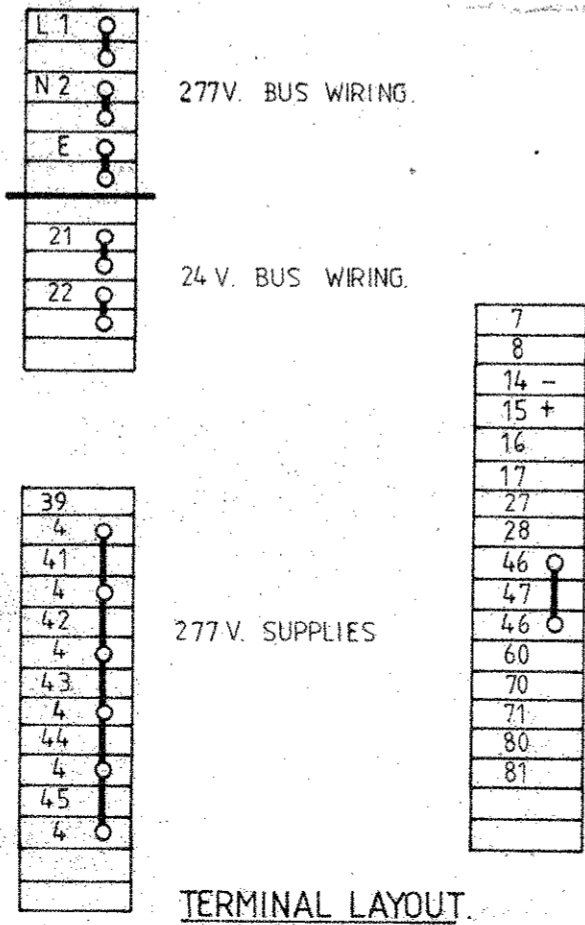
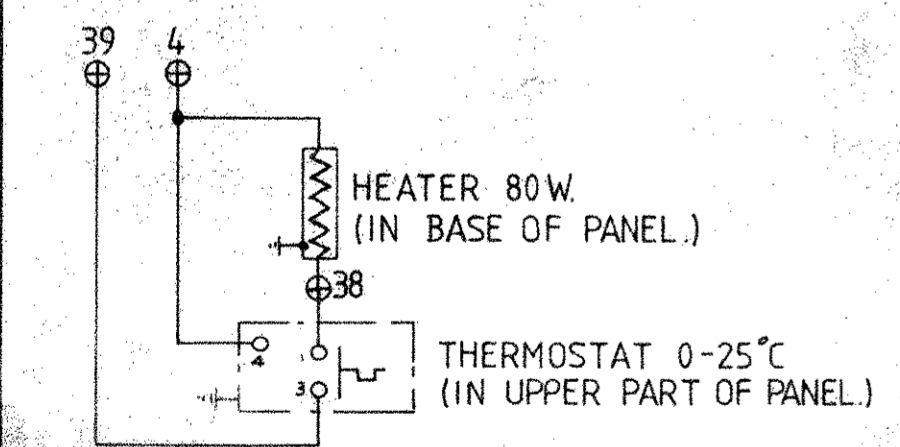
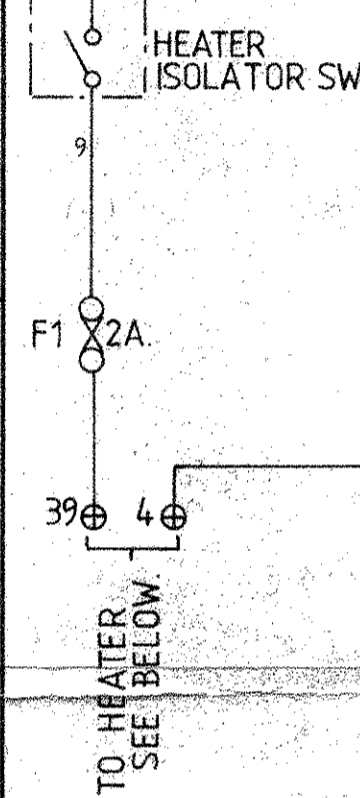
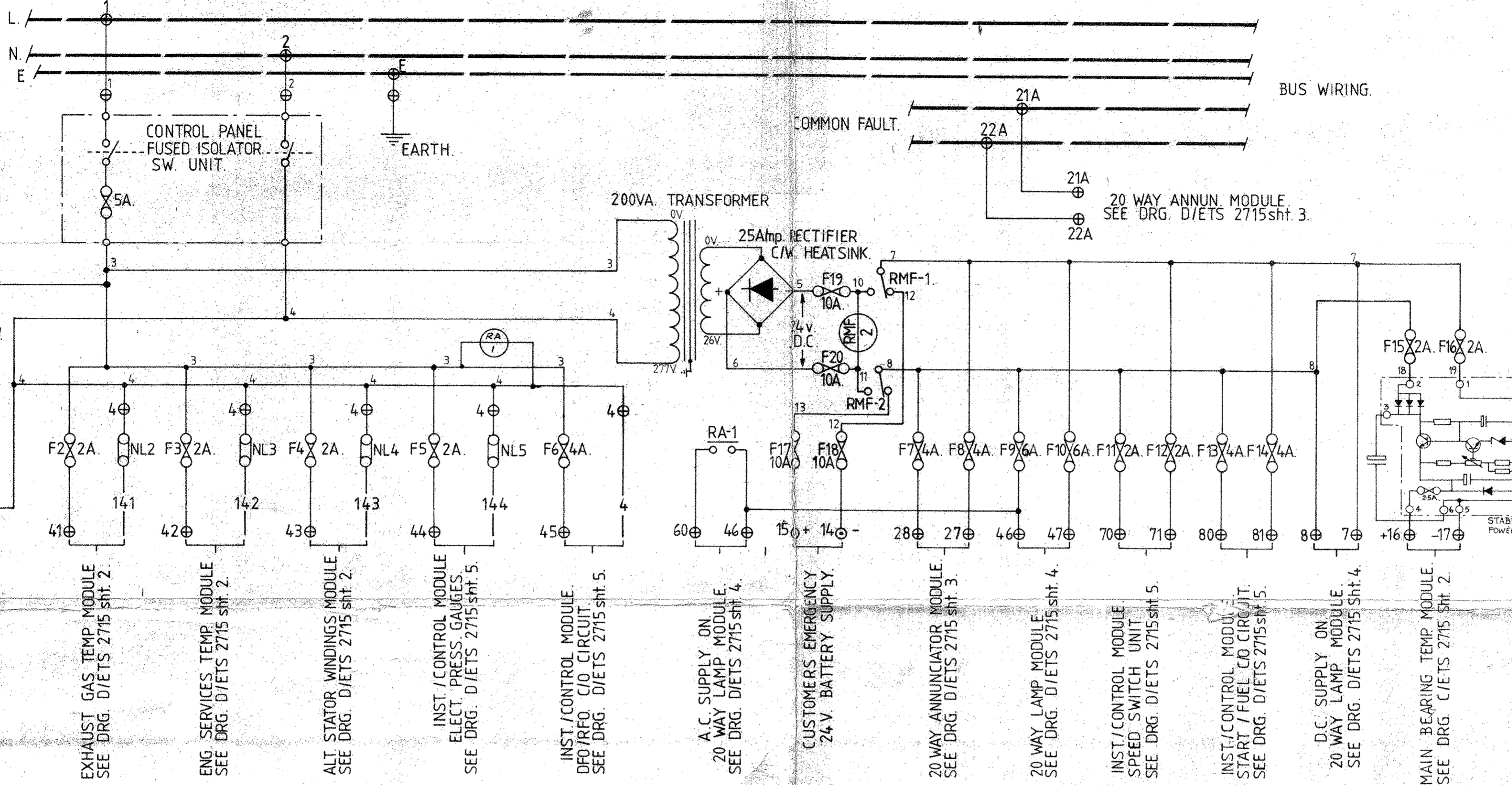
PARTS LIST

DIMENSIONS IN MILLIMETRES  
(INCHES IN BRACKETS)

IF IN DOUBT ASK  
THIRD ANGLE PROJECTION

DRG. No. **C/ETS 2715 sht. 1.**

ISSUE & DATE	CHANGE
0.	AS DRAWN
1.	CUSTOMERS SUPPLY CHANGED. RMF RELAY C/O CIRCUIT ADDED. NOTE & 10% SPARE TERM'S ADDED. BEARING TEMP MODULE WAS A.C SUPPLY NOW 24 V. DC FUSE N°S REVISED. CUSTOMERS EMERGENCY SUPPLY CONNECTION REVISED. WIRE N°S TO ANNUNCIATOR REVERSED
2.	TRANSFORMER PRIM. SEC. VOLT TAPPINGS ADDED.
5/5/81.	S.P.S.U. ADDED.
3.	F17 & F18 WERE 4A. CAPACITOR WAS CONNECTED ACROSS TWO POSITIVE LINES ON STAB. POWER SUPPLY.
11/6/81	
4.	NEUTRAL LINKS ADDED TO A.C. SUPPLY LINES.
26/6/81	
5.	AS MADE 26/6/81



RA - A.C. POWER ON RELAY.  
RMF - MAINS FAILURE RELAY - C/O TO BATTERY SUPPLY.

**CABLE COLOUR CODE**  
AC - LINE RED.  
AC - NEUTRAL BLACK.  
DC - CONTROL GREY.  
EARTH - GREEN/YELLOW.

ALL CABLES ARE 1mm<sup>2</sup> MULTI-STRAND.  
EXCEPT COMMON BUS WIRING - 2.5mm<sup>2</sup>.

ALL BUS WIRING TERMINALS TO BE SHROUDED TYPE WITH WARNING LABEL.

NOTE:- SUPPLY OFF RELAYS DE-ENERGISED

<b>AMOT CONTROLS LTD.</b> ELTON WORKS WESTERN WAY BURY ST. EDMUNDS SUFFOLK ENGLAND	TOLERANCES		MAT'L.	DRWN. D.I.	TITLE
	UNLESS OTHERWISE STATED:		SPEC.	TRCD.	SCHEMATIC WIRING DIAGRAM SUPPLY DISTRIBUTION PLATE ENGINE PANEL.
	DIMS. IN BASIC MM.	±	FINISH	CHKD.	
	DIMS. TO ONE PLACE DEC.	±	SPEC.	APPR.	
	DIMS TO TWO PLACE DEC.	±	SURFACE	M/CD.	SCALE
	ANGULAR DIMS.	±	FINISH	CAST	DATE 11/11/80
RADII CAST:	M/CD	REMOVE SHARP CORNERS		MODEL(S)	DRG. No. <b>C/ETS 2715 sht. 1.</b>

#36a