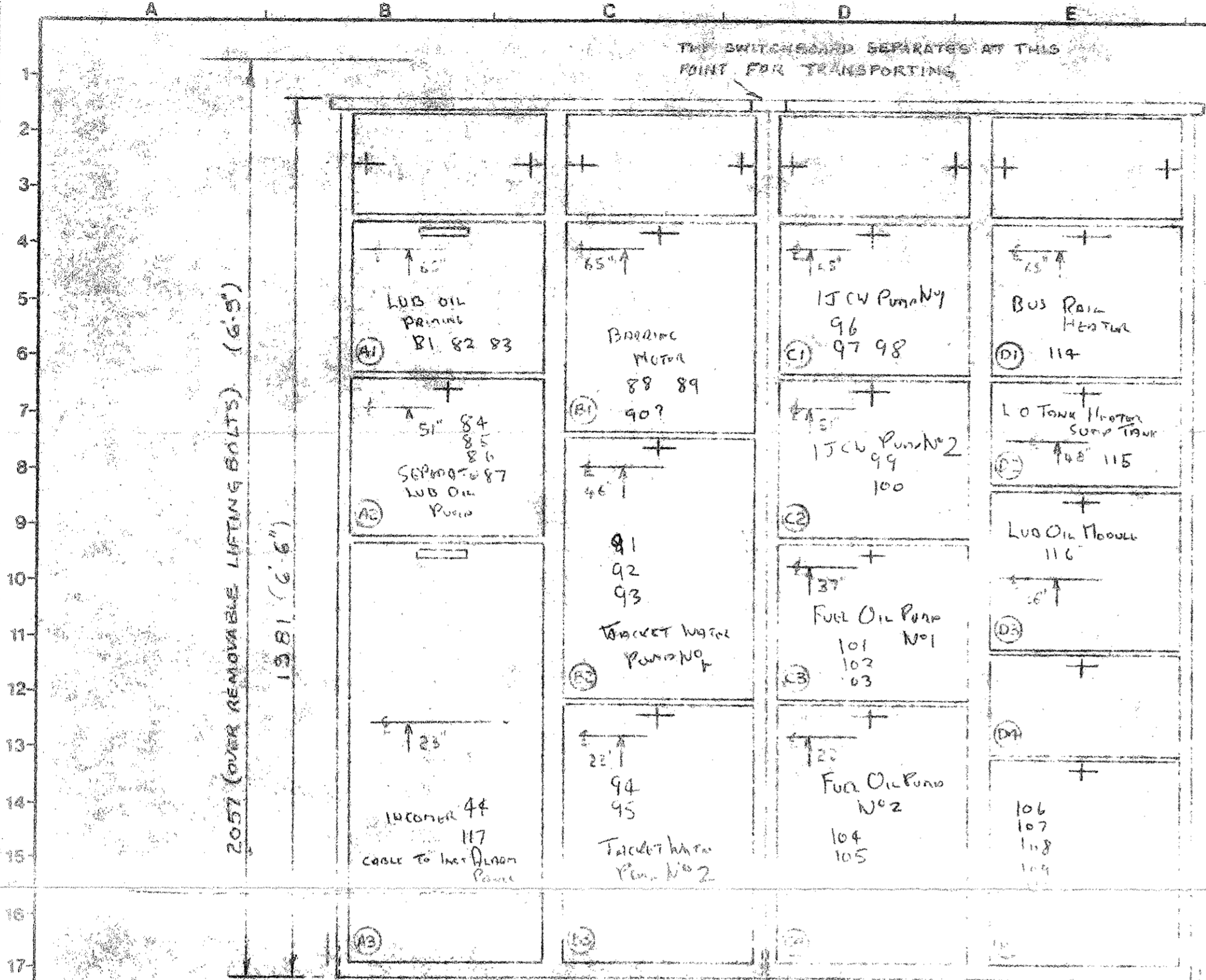


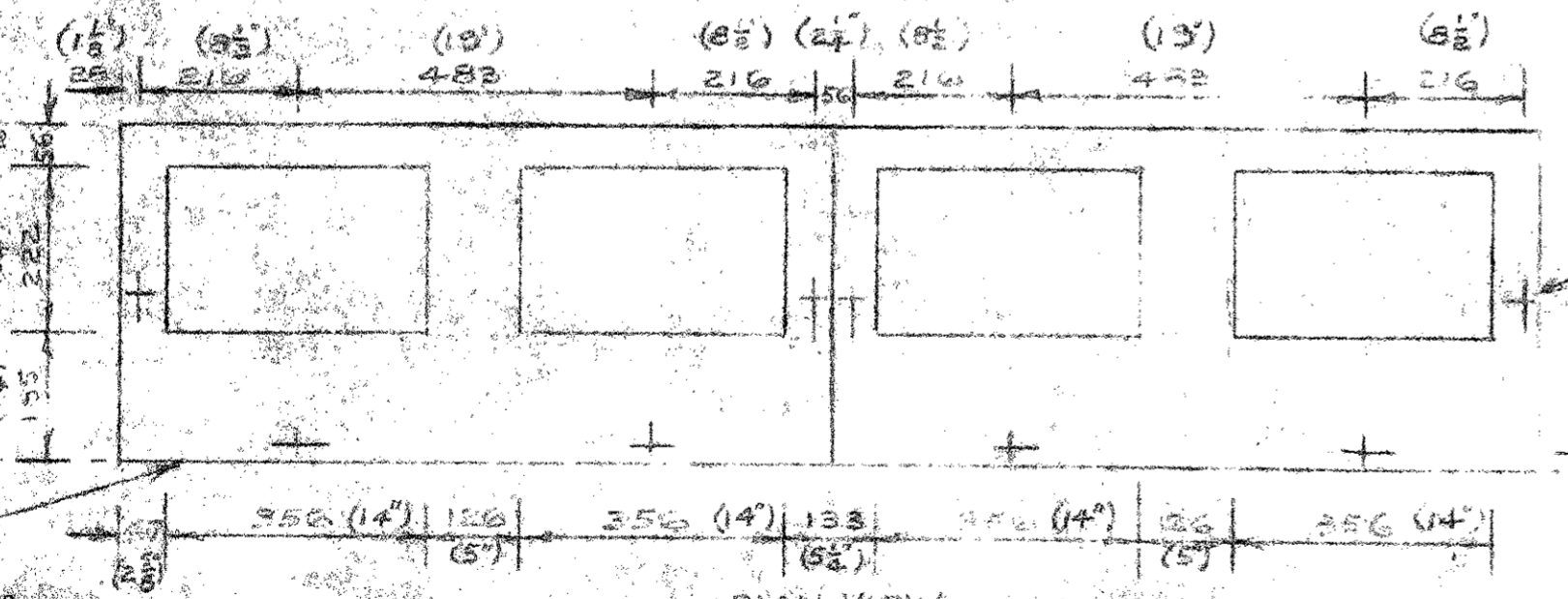
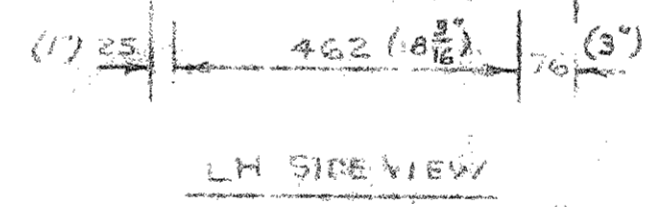
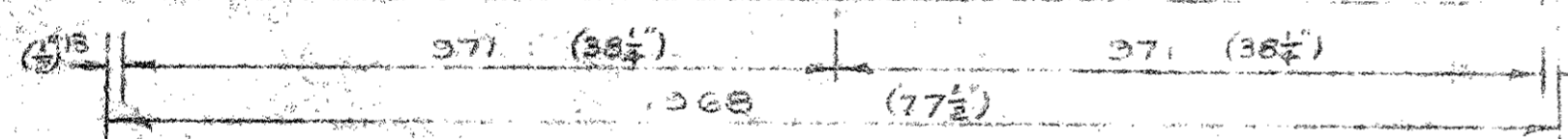
THE SWITCHBOARD SEPARATES AT THIS POINT FOR TRANSPORTING



ALLOW 450mm (18") CLEARANCE FOR ACCESS

MAX DOOR SWING 450 (17")

REF	DESIGNATION
✓ A1	L.O. PRIMING PUMP
✓ A2	S.R.G. L.O. STANDBY PUMP
- A3	INCOMER
✓ B1	BARRING MOTOR
✓ B2	T.W. PUMP 1
✓ B3	T.W. PUMP 2
✓ C1	I.J.C.V. PUMP 1
✓ C2	I.J.C.V. PUMP 2
✓ C3	F.O. PUMP 1
✓ C4	F.O. PUMP 2
✓ D1	BUS RAIL HEATER
✓ D2	L.O. TANK HEATER
✓ D3	L.O. MODULE
✓ D4	DIST. BOARD FEEDER
✓ D5	DIST. BOARD



8 HOLES 16mm DIA. FLANGING BOLTS

ENCLOSURE - DUST & DAMP TYPE 'C' TO I.P.S.I.

FINISH - ETCH PRIMER, ONE UNDER COAT AND ONE TOP COAT OF SEMI GLOSS LIGHT GREY (BS 1 TO BS 381-C) INTERIOR - WHITE.

12 MAR 1982

R. SMYTH

FIRST ANGLE PROJECTION

TERMINAL MARKINGS TO B.S. 2938
GRAPHICAL SYMBOLS TO B.S. 108

SHOWING FLOOR FIXINGS & CABLE ENTRY CUTOUT WITH BRONY ENVIANYO CLIPS

IF IN DOUBT PLEASE ASK

REV	ISSUE	REVISIONS		MATERIAL	FINISH	TITLE
		AMD	R/R			
1		BASE FIXINGS MODIFIED TO CUSTOMER'S REQUIREMENTS				GENERAL ARRANGEMENT OF M.C.C. FOR ENGINES
2		MATERIAL DIMENSIONS ADDED CABLE LETTER IS 5-51				
				DRN. <i>R. Smyth</i>	DATE <i>12 MAR 1982</i>	WHIPPENDELL ELECTRICAL MANUFACTURING Co. (WATFORD) LTD. NEG. S.O. 30 266 SCALE 1:10 DRAWING NUMBER C
				CHK'D.		
				ENG'D.		
				TRC'D.		
				TR. CHK'D.		

THIS DRAWING IS THE PROPERTY OF WHIPPENDELL ELECTRICAL MANUFACTURING CO. (WATFORD) LTD. AND MAY NOT BE COPIED, USED OR DISCLOSED FOR ANY PURPOSE EXCEPT AS AUTHORIZED IN WRITING BY WHIPPENDELL ELECTRICAL MANUFACTURING CO. (WATFORD) LTD.