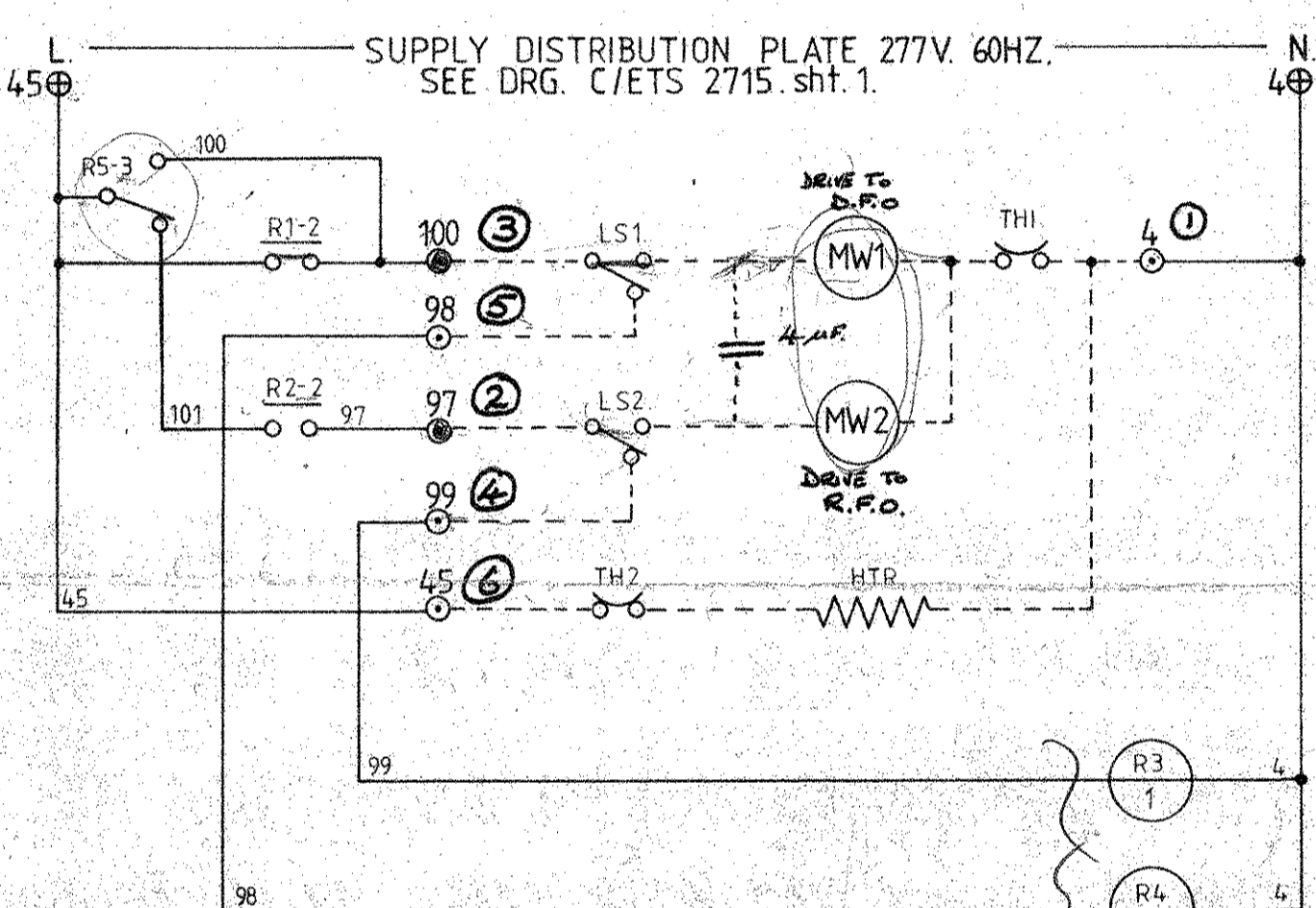
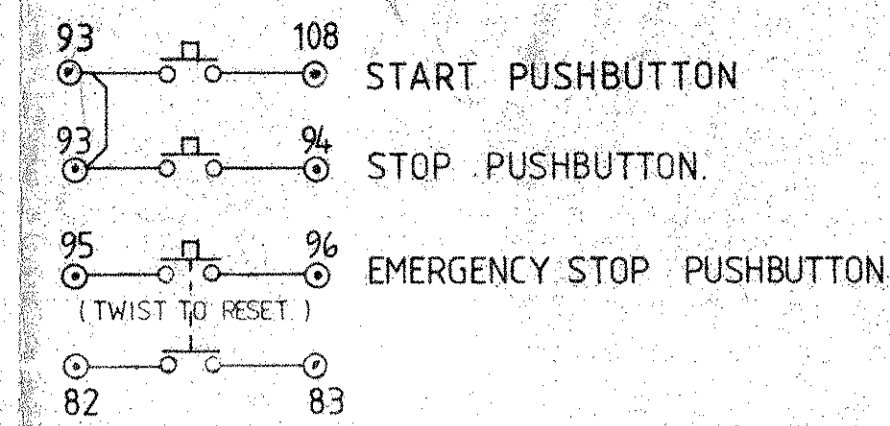
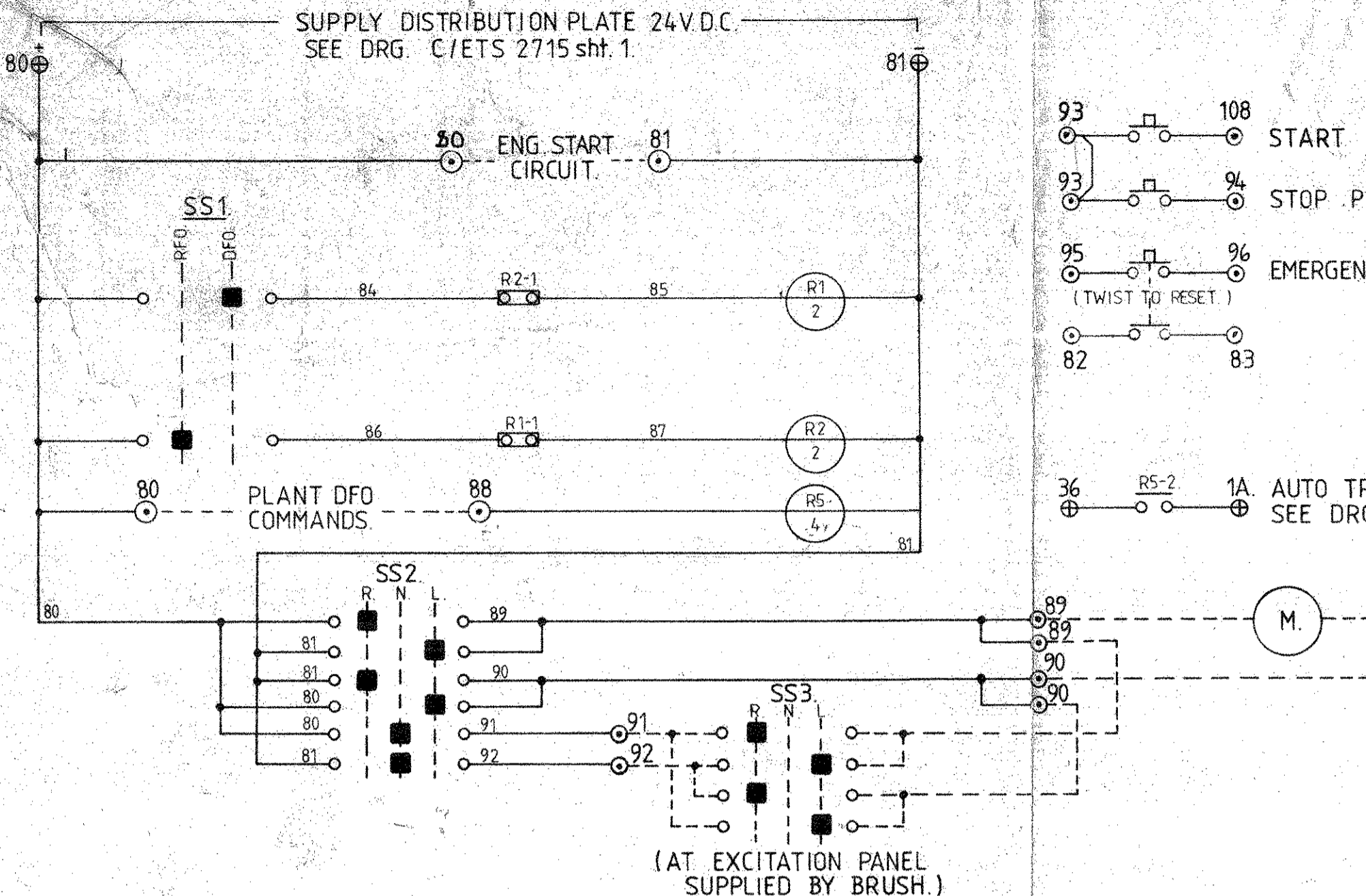


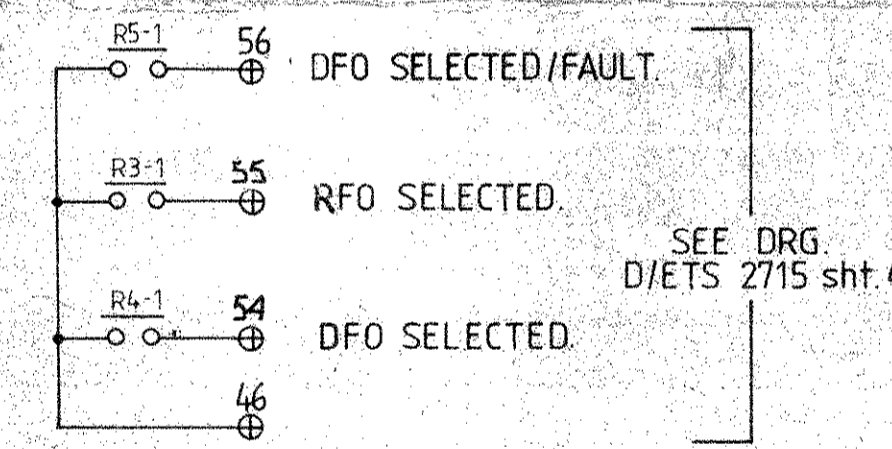
DIMENSIONS IN MILLIMETRES
(INCHES IN BRACKETS)

IF IN DOUBT ASK
THIRD ANGLE PROJECTION

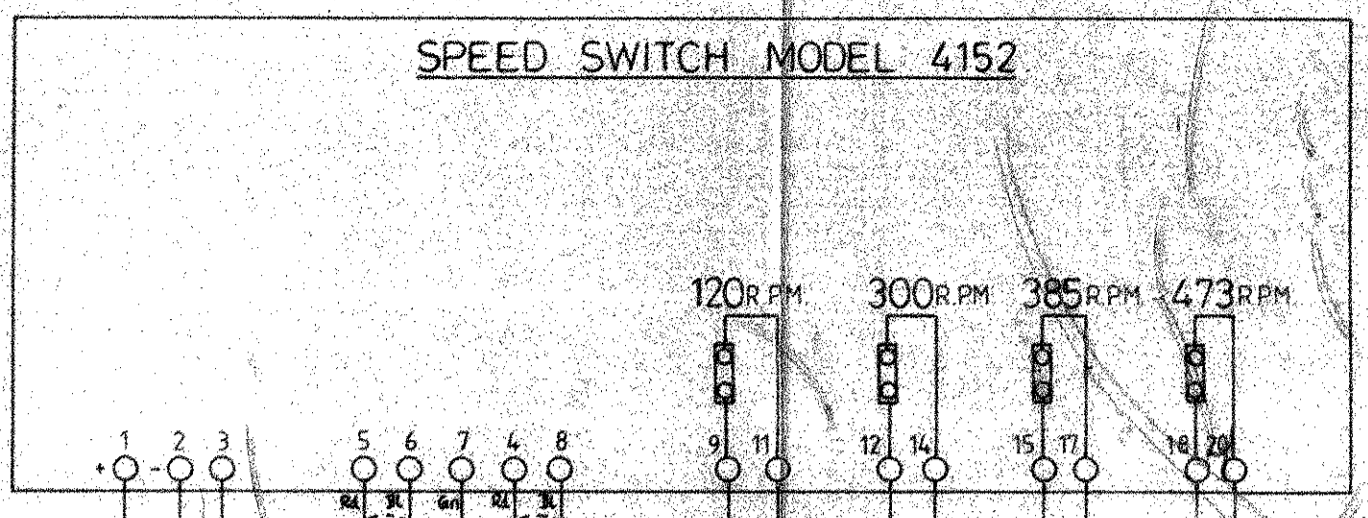
SUPPLY DISTRIBUTION PLATE 24V.D.C.
SEE DRG. C/ETS 2715 sht. 1.



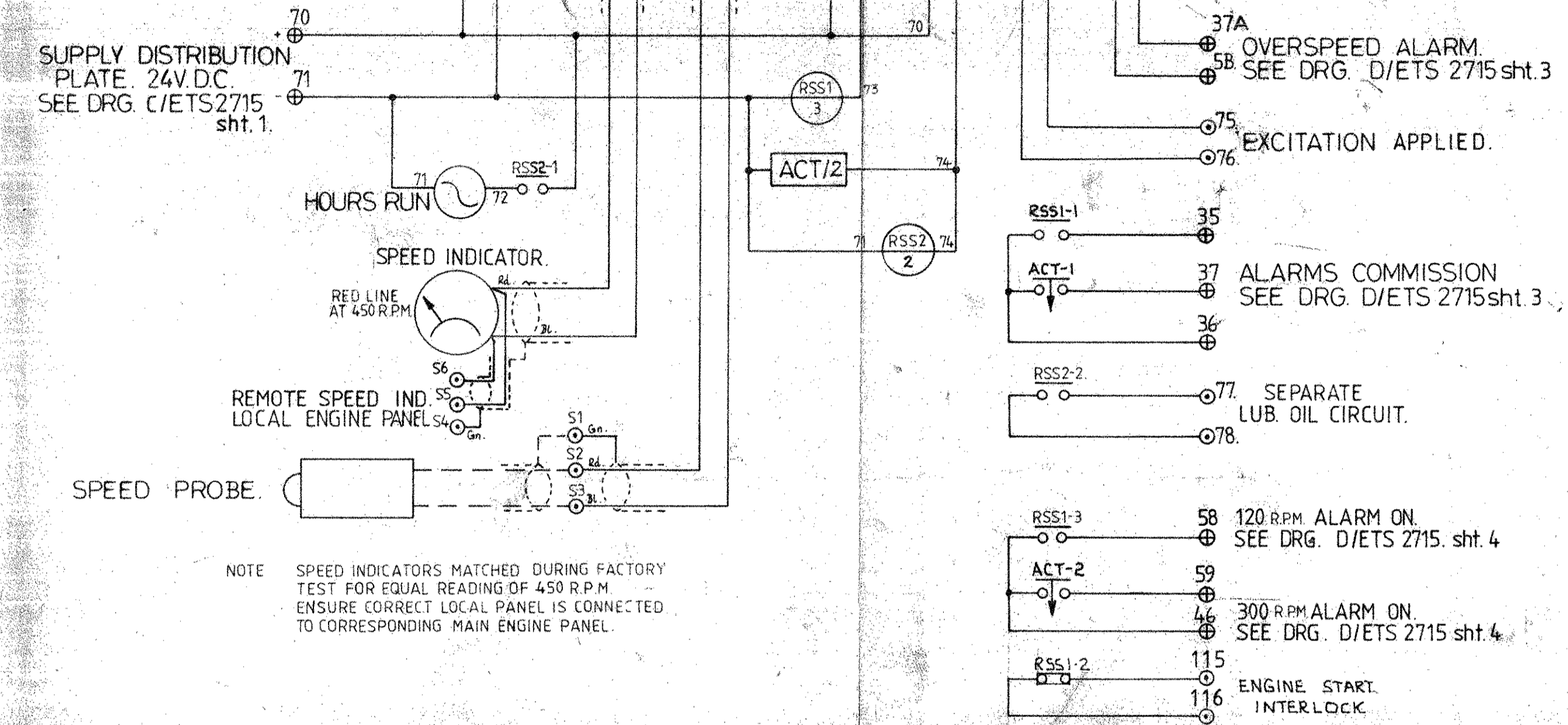
VALUE TERMINAL NUMBERS
IN CIRCLES.



NOTE -
SPEED SW. CONTACTS
SHOWN DE-ENERGISED.
CONTACTS ENERGISE BELOW
SETPOINTS AND DE-ENERGISE
WHEN SETPOINTS ARE
REACHED



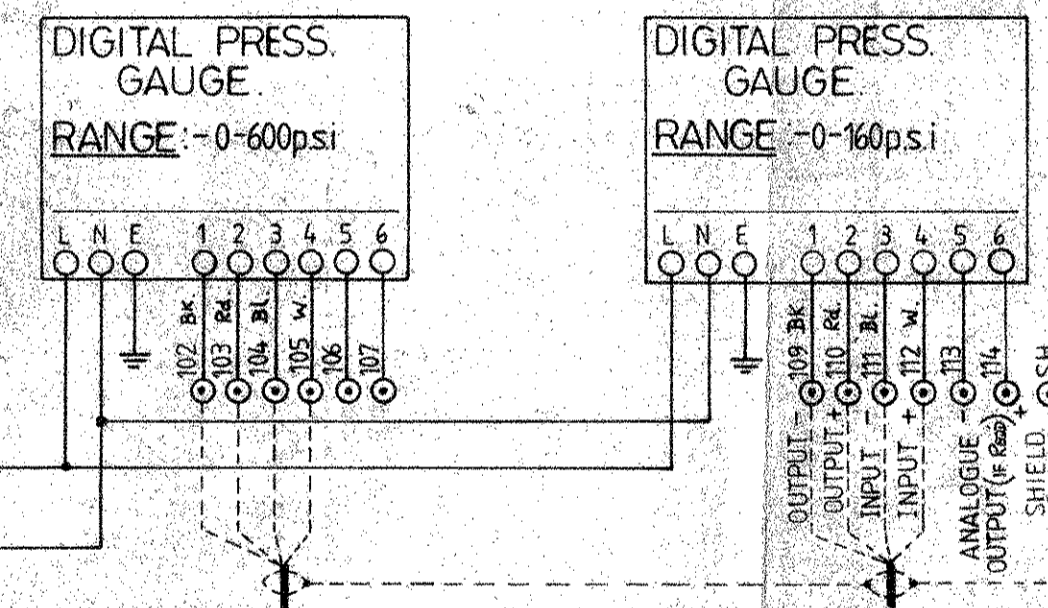
SUPPLY DISTRIBUTION
PLATE 24V.D.C.
SEE DRG. C/ETS 2715
sht. 1.



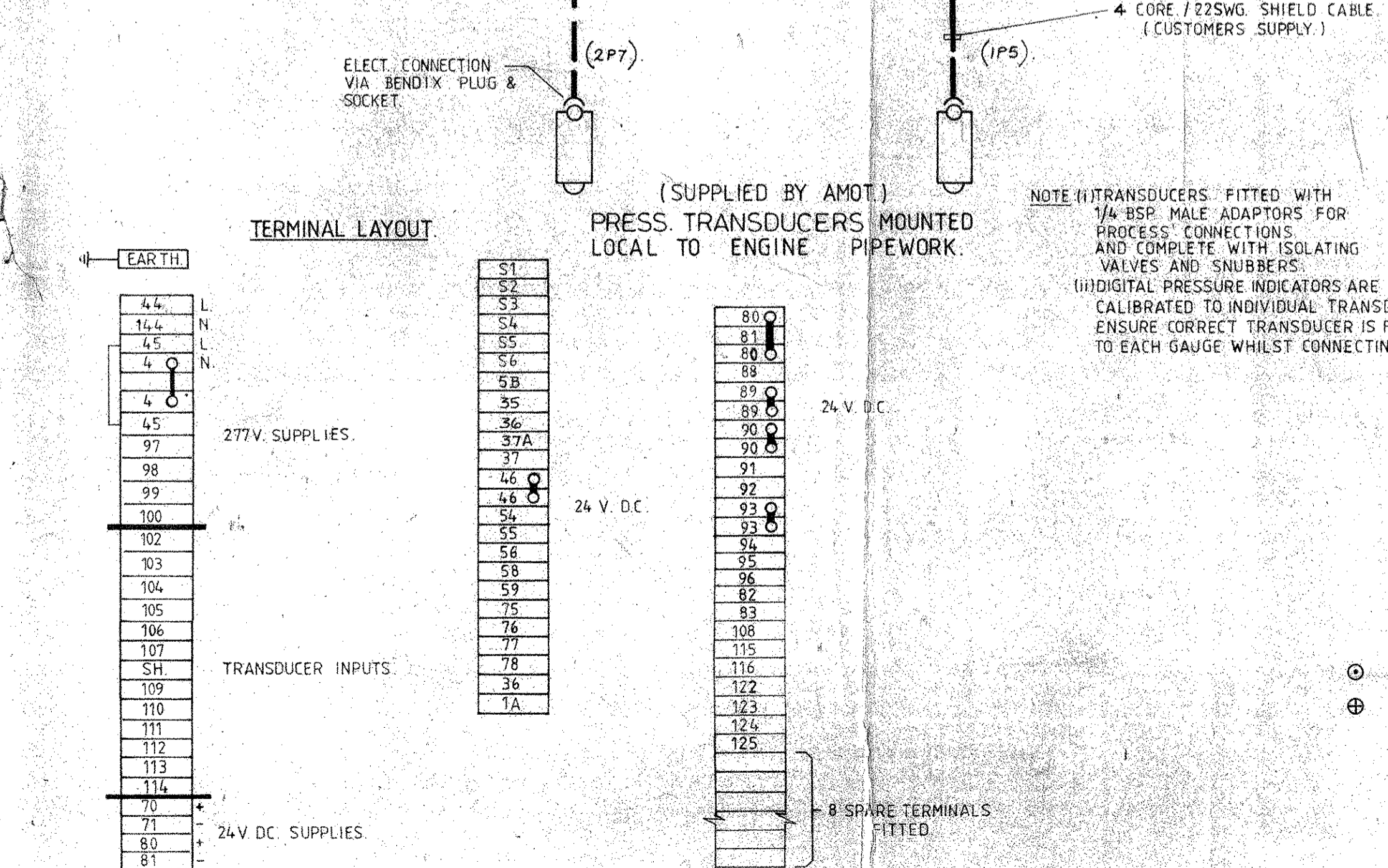
NOTE SPEED INDICATORS MATCHED DURING FACTORY
TEST FOR EQUAL READING OF 450 R.P.M.
ENSURE CORRECT LOCAL PANEL IS CONNECTED
TO CORRESPONDING MAIN ENGINE PANEL.

- 37A OVERSPEED ALARM
SEE DRG. D/ETS 2715 sht. 3
- 75 EXCITATION APPLIED.
- 76
- RSS1-1 35
- ACT-1 37 ALARMS COMMISSION
SEE DRG. D/ETS 2715 sht. 3
- 36
- RSS2-2 77 SEPARATE
LUB. OIL CIRCUIT.
- 78
- RSS1-3 58 120 RPM ALARM ON.
SEE DRG. D/ETS 2715 sht. 4
- ACT-2 59
- 46 300 RPM ALARM ON.
SEE DRG. D/ETS 2715 sht. 4
- RSS1-2 115
- 116 ENGINE START
INTERLOCK.

STARTING AIR PRESS. FUEL OIL PRESS.



SUPPLY DISTRIBUTION
PLATE 277V. 60 HZ.
SEE DRG. C/ETS 2715
sht. 1.



- ACT. ALARMS COMMISSION TIMER 0-30sec.
- RSS1. SPEED SW. RELAY 120r.p.m.
- RSS2. " " " 300r.p.m.
- SS1. FUEL VALVE MODE SELECTOR SW.
- R1. DFO CONTROL RELAY.
- R2. RFO " "
- R3. DFO INDICATION RELAY.
- R4. RFO " "
- R5. DFO COMMAND " "
- LS1. TRAVEL LIMIT C/O. POS. 1.
- LS2. " " " 2.
- MW1/2. ACTUATOR MOTOR WINDINGS.
- TH1/2. THERMAL CUTOUT.
- HTR. ANTI-CONDENSATION HEATER.
- SS2. RAISE/NEUTRAL/LOWER SELECTOR SW. (SPRING RETURN TO CENTRE.) LOCAL.
- SS3. " " " " " " " " REMOTE (NOT AMOT SUPPLY.)
- SS4. LOCAL-REMOTE SELECTOR SW.
- M. MOTOR COIL FOR RAISE/LOWER CONTROL.

- ⊙ CUSTOMERS CONNECTION TERMINALS.
- ⊕ MODULE INTERCONNECTION TERMINALS.

CABLE COLOUR CODE
AC-LINE. RED.
AC-NEUTRAL. BLACK.
DC-CONTROL. GREY.
EARTH. GREEN/YELLOW
CABLE TO BE 1mm² MULTI-STRAND.

AMOT CONTROLS LTD. ELTON WORKS WESTERN WAY BURY ST. EDMUNDS SUFFOLK ENGLAND	TOLERANCES	MATL.	DRWN. D.I.	TITLE
	UNLESS OTHERWISE STATED:	SPEC.	TRCD.	SCHEMATIC WIRING DIAGRAM INSTRUMENT & CONTROL MODULE ENGINE PANEL.
	DIMS. IN BASIC MM.	FINISH	CHKD.	
	DIMS. TO ONE PLACE DEC.	SPEC.	APPR.	
DIMS. TO TWO PLACE DEC.	SURFACE FINISH	M/CD.	SCALE	
© COPYRIGHT AMOT CONTROLS LTD owns the copyright of this drawing which is supplied in confidence and must not be divulged to a third party or reproduced without the prior consent of the owners.	ANGULAR DIMS.	CAST	DATE 11/11/80	MODEL (S)
RAJII CAST.	M/GCD	REMOVE SHARP CORNERS		

DRG. No. D/ETS 2715 sht 5	CHANGE
0 AS DRAWN	
1 CUSTOMERS SUPPLY PRESS GAUGE CIRCUIT AND INFO. REVISED & ADDED.	
2 TERM LAYOUT & NOTES REVISED TITLE WORDING ADDED PRESS GAUGE & TRANSDUCER CONN. REVISED. SHUNT CAL. NOTE DELETED.	
19/9/81 COMMISSION CIRCUIT TERM'S REVISED.	
3 Screened Cable Colours Added.	
5/9/81	
4 ISO VALVE & SNUBBERS NOTE ADDED.	
12/9/81	
5 SS4 ADDED	
6 MODIFIED AS PER MARKED LIP PRINT	
8/6/81	
7 TERMINALS NO'S MODIFIED. JUMBERS ADDED ON TERMINAL BLOCK.	
11/6/81	
8 NOTES REFERING TO SPEED INDICATORS & TRANSDUCERS ADDED. WIRE NO 144 WAS 4.	
24/6/81	
9 AS MADE 26/6/81	