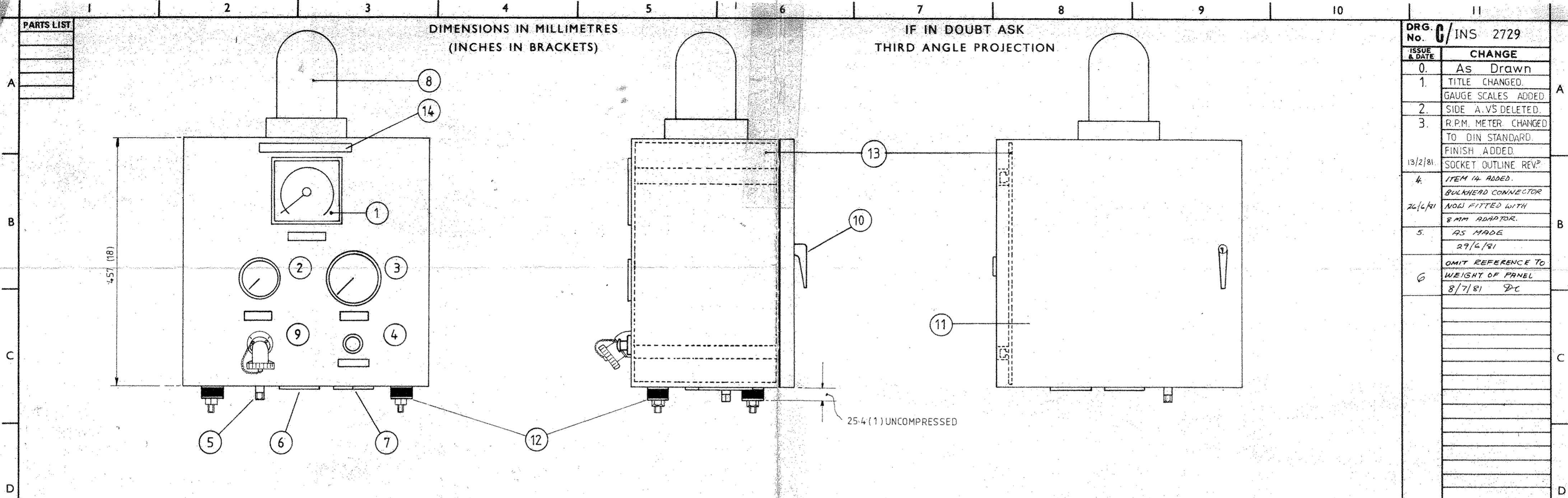


PARTS LIST

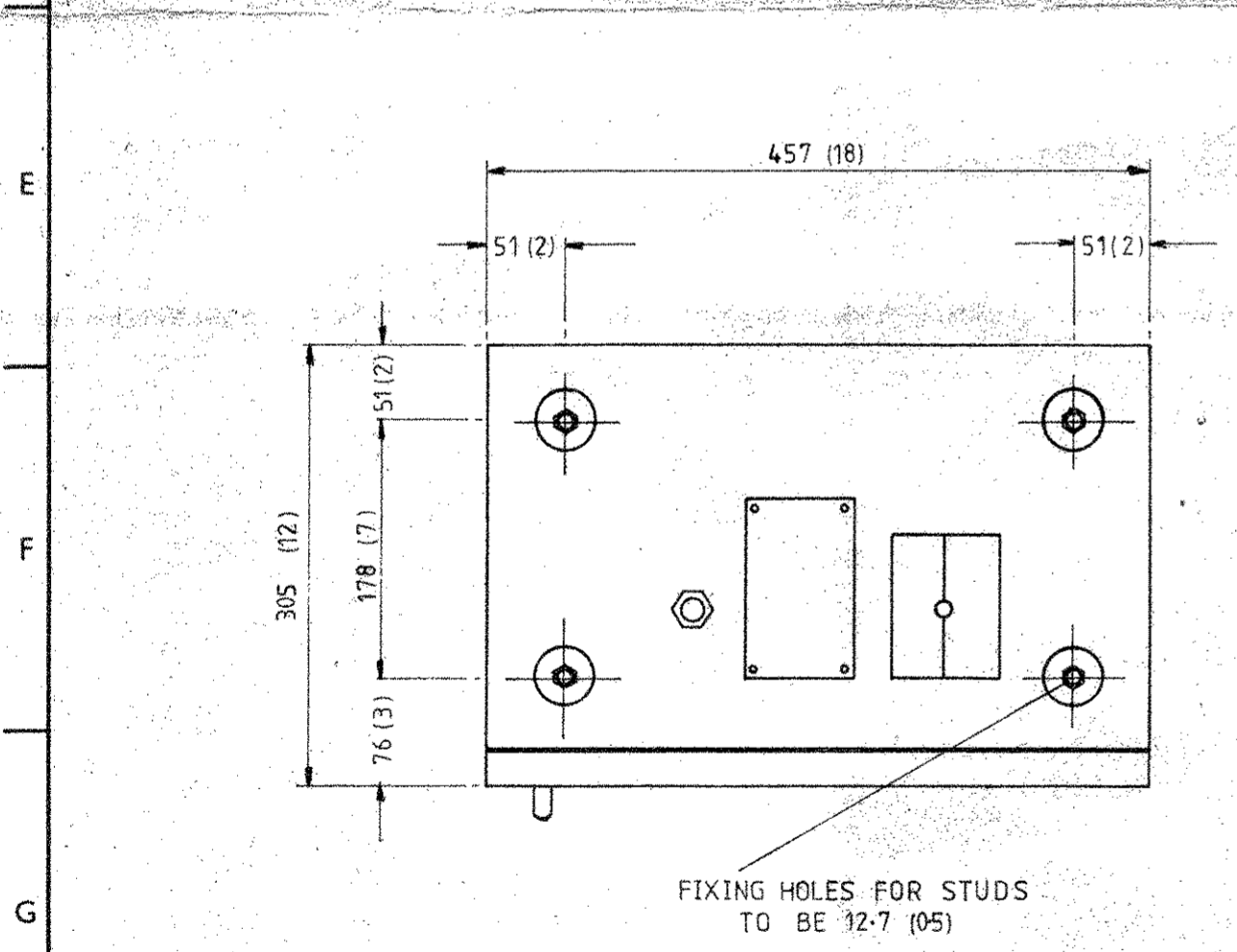
DIMENSIONS IN MILLIMETRES
(INCHES IN BRACKETS)

IF IN DOUBT ASK
THIRD ANGLE PROJECTION

DRG. No. **C/INS 2729**



ISSUE & DATE	CHANGE
0.	As Drawn
1.	TITLE CHANGED. GAUGE SCALES ADDED
2.	SIDE A.V.S DELETED.
3.	R.P.M. METER CHANGED TO DIN STANDARD. FINISH ADDED.
13/2/81	SOCKET OUTLINE REV?
4.	ITEM 14 ADDED. BULKHEAD CONNECTOR NOW FITTED WITH 8MM ADAPTOR.
26/6/81	AS MADE 29/6/81
6	OMIT REFERENCE TO WEIGHT OF PANEL 8/7/81 DC



- 1. ENGINE SPEED INDICATOR. 0-600 R.P.M. (red line at 450 R.P.M.)
- 2. PRESSURE GAUGE "LUB OIL" 0-160 p.s.i. / 0-7 KG/CM²
- 3. TEMPERATURE GAUGE "JACKET WATER" 0-150°C / 32-300°F.
- 4. EMERGENCY STOP PUSHBUTTON (TWIST TO RESET) FINISH: 2-PACK EPOXY, COLOUR TO BS. 4800. SHADE 10A07.
- 5. BULKHEAD CONNECTOR 5/16" O.D., WITH 8mm ADAPTOR. MATERIAL: 14 swg MILD STEEL
- 6. REMOVABLE GLAND PLATE 76(3) x 127(5")
- 7. REMOVABLE "SPLIT" GLAND PLATE PROTECTION: IP 54
- 8. ALARM FLASHING BEACON
- 9. BARRING GEAR SOCKET (WEATHERPROOF)
- 10. LOCKABLE DOOR HANDLE
- 11. DOOR, HINGED AND FULLY GASKETTED
- 12. ANTI-VIBRATION MOUNTS
- 13. INTERNAL MOUNTING PLATE
- 14. ENGINE IDENTIFICATION LABEL

#35

AMOT CONTROLS LTD ELTON WORKS WESTERN WAY BURY ST. EDMUNDS SUFFOLK ENGLAND	TOLERANCES		MATL. —	DRWN. <i>D.H.</i>	TITLE LOCAL ENGINE INSTRUMENT PANEL
	UNLESS OTHERWISE STATED:		SPEC. —	TRGD. —	
	DIMS. IN BASIC MM.	±	FINISH —	CHKD. —	
	DIMS. TO ONE PLACE DEC.	±	SPEC. —	APPR. —	
DIMS. TO TWO PLACE DEC.	±	SURFACE M/GD. —	SCALE 1:5	DATE 6.11.80	
ANGULAR DIMS.	±	FINISH CAST	REMOVE SHARP CORNERS	MODEL(S)	
RADII CAST.	M/CD			DRG. No. C/INS 2729	