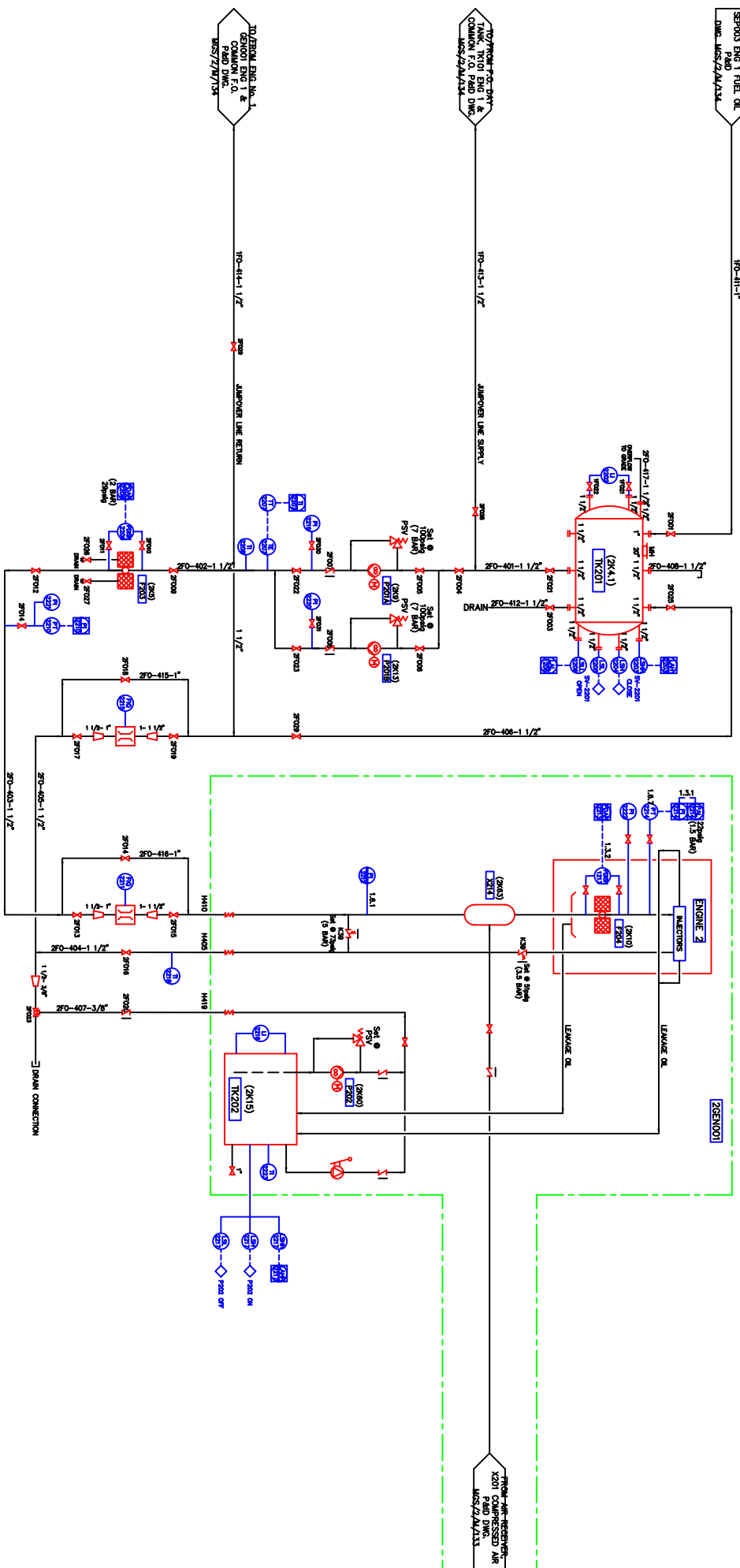


TK201 (2K4.1)
FUEL OIL DAY TANK
9.775US GALLONS (37.000)

E204 (2K10)
DUPEX FUEL OIL
MAIN FILTER (150
MICRON)

X214 (2K63)
PULSATION
DAMPENER/GENERATOR SET No.
2



E203 (2K5)
FUEL OIL DUPEX
PREFILTER ENGINE No. 2
(150 MICRON)

P201A (2K9)
FUEL OIL BOOSTER PUMP
ENGINE No. 2

P201B (2K13)
FUEL OIL BOOSTER PUMP
(STANDBY) ENGINE No. 2
100psi (7 BAR) / 1.270US GPH

P202 (2K60)
FUEL OIL LEAKAGE OIL
PUMP ENGINE No. 2
75psi (5 BAR) / 1.585US GPH

TK202 (2K15)
LEAK OIL TANK
ENGINE No. 2
28.5US GALLONS (100L)

CORKE
CORKE INSTRUMENT ENGINEERING AUSTRALIA
15 EXPORT DRIVE, BROOKLYN VICTORIA 3163
Telephone: (03) 9314 2622
Email: corke@corke.com URL: corke.com.au

CLIENT'S REVIEW
CONVERSION TO P&ID

NO.	DATE	DESCRIPTION
1		CLIENT'S REVIEW
2		CONVERSION TO P&ID

CLIENT MARSHALL ENERGY CO.
ENGINE 2
FUEL OIL P&ID

DRAWING No: MGS/2/M/135
CLIENT'S REVIEW