

Site Information:

Project: Wind Monitoring

Location: NIHS Campus

Elevation: 5

Sensor Information:

1 NRG #40 Anem. m/s
 2 NRG #40 Anem. m/s
 3 NRG #40 Anem. m/s
 4 No SCM Installed
 5 No SCM Installed
 6 No SCM Installed

13 NRG #40 Anem. m/s
 15 NRG #40 Anem. m/s

7 #200P Wind Vane
 8 #200P Wind Vane
 9 NRG #110S Temp C
 10 Licor Pyran W/sqm
 11 BP-20 Barom. mb
 12 VOLTMETER

14 NRG #40 Anem. m/s

9/20/2012 to 4/10/2013**Summary Report**

SITE 8207

Wotje

Channel	1	2	3				7	8	9	10	11	12	13	14	15
Height	34 m	33 m	20 m	-----	-----	-----	32 m	0	3 m	3 m	3 m	2 m	0	0	0
Units	m/s	m/s	m/s	-----	-----	-----	deg	deg	C	W/sqm	mb	VOLTS	m/s	m/s	m/s
Intervals with Valid Data	29070	29070	29070				29070	29070	29070	29070	29070	29070	29070	29070	29070
Average Filtered Data	8.73	8.77	8.33				60.66	39.43	27.78	243.71	1009.38	13.48	0.4	0.4	0.4
Average for All Data	8.73	8.77	8.33				60.66	39.43	27.78	243.71	1009.38	13.48	0.4	0.4	0.4
Min Interval Average	0.3	0.3	0.3						24	0	1004.1	11.1	0.4	0.4	0.4
Date of Min Interval	9/23/2012	9/23/2012	9/23/2012						10/9/2012	12/10/2012	12/26/2012	9/20/2012	12/10/2012	12/10/2012	12/10/2012
Time of Min Interval	6:00:00 PM	6:00:00 PM	6:00:00 PM						6:20:00 AM	9:20:00 PM	5:40:00 PM	10:00:00 AM	9:20:00 PM	9:20:00 PM	9:20:00 PM
Max Interval Average	17.2	17.3	16.3						32.4	1227	1015.8	14	0.4	0.4	0.4
Date of Max Interval	11/9/2012	11/9/2012	11/9/2012						9/23/2012	9/24/2012	10/12/2012	9/27/2012	12/10/2012	12/10/2012	12/10/2012
Time of Max Interval	10:20:00 AM	10:20:00 AM	10:20:00 AM						11:30:00 AM	11:50:00 AM	9:10:00 AM	9:10:00 AM	9:20:00 PM	9:20:00 PM	9:20:00 PM
Average Interval SD	0.65	0.66	0.7				4.46	0.77	0.09	39.12	0.17	0	0	0	0
Min Sample	0.3	0.3	0.3						24	0	1004.1	10.9	0.4	0.4	0.4
Date of Min Sample	9/23/2012	9/23/2012	9/20/2012						10/9/2012	12/10/2012	12/18/2012	9/20/2012	12/10/2012	12/10/2012	12/10/2012
Time of Min Sample	2:30:00 PM	2:00:00 PM	4:40:00 PM						6:10:00 AM	9:20:00 PM	4:00:00 AM	10:00:00 AM	9:20:00 PM	9:20:00 PM	9:20:00 PM
Max Sample	21.1	21.4	21.1						33	1351.7	1016.8	14.3	0.4	0.4	0.4
Date of Max Sample	11/9/2012	11/9/2012	9/25/2012						9/22/2012	9/20/2012	10/12/2012	11/8/2012	12/10/2012	12/10/2012	12/10/2012
Time of Max Sample	10:20:00 AM	10:20:00 AM	3:00:00 AM						1:10:00 PM	12:40:00 PM	9:10:00 AM	8:40:00 AM	9:20:00 PM	9:20:00 PM	9:20:00 PM
Average Interval TI	0.08	0.08	0.09										0	0	0
Wind Speed Direction							ENE	N							

Site Information:

Project: Wind Monitoring
Location: NIHS Campus
Elevation: 5

Sensor on channel 1:

NRG #40 Anem. m/s
Height: 34 m
Serial #: SN: 9854

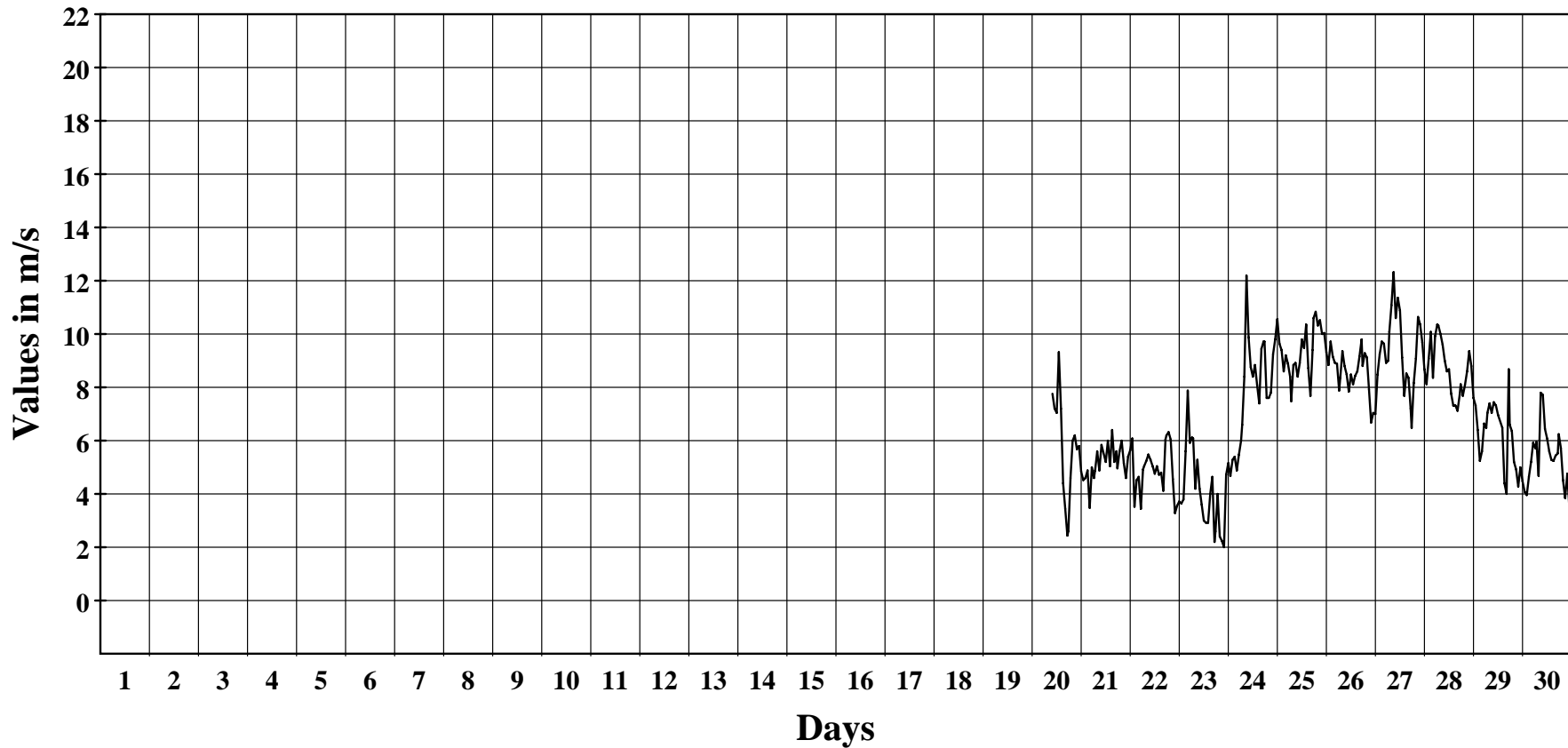
September 2012

Hourly Averages Graph (Windspeed)

SITE 8207

Wotje

Average Hourly Values



Average Value: 6.9

Site Information:

Project: Wind Monitoring
Location: NIHS Campus
Elevation: 5

Sensor on channel 1:

NRG #40 Anem. m/s
Height: 34 m
Serial #: SN: 9854

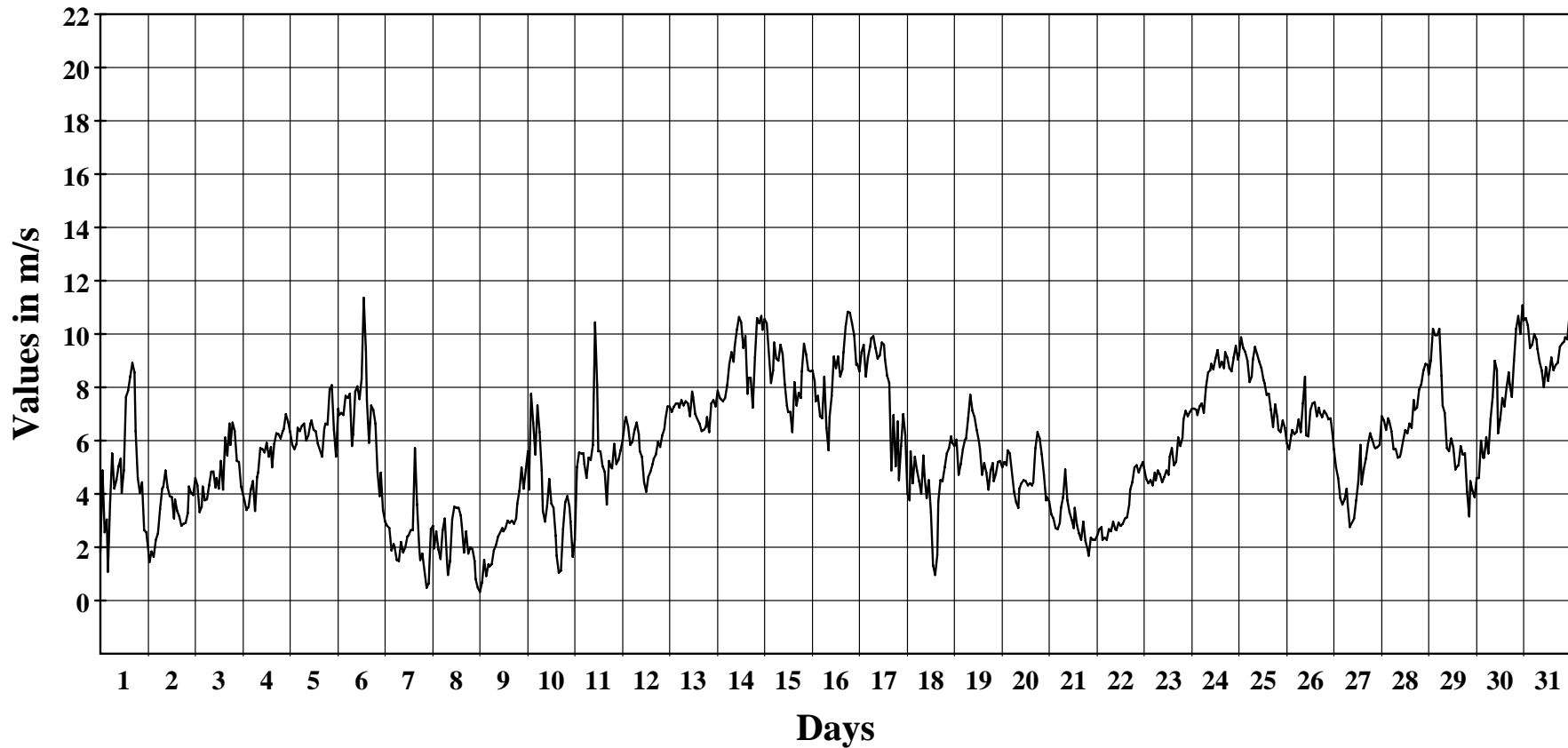
October 2012

Hourly Averages Graph (Windspeed)

SITE 8207

Wotje

Average Hourly Values



Average Value: 5.8

Site Information:

Project: Wind Monitoring
Location: NIHS Campus
Elevation: 5

Sensor on channel 1:

NRG #40 Anem. m/s
Height: 34 m
Serial #: SN: 9854

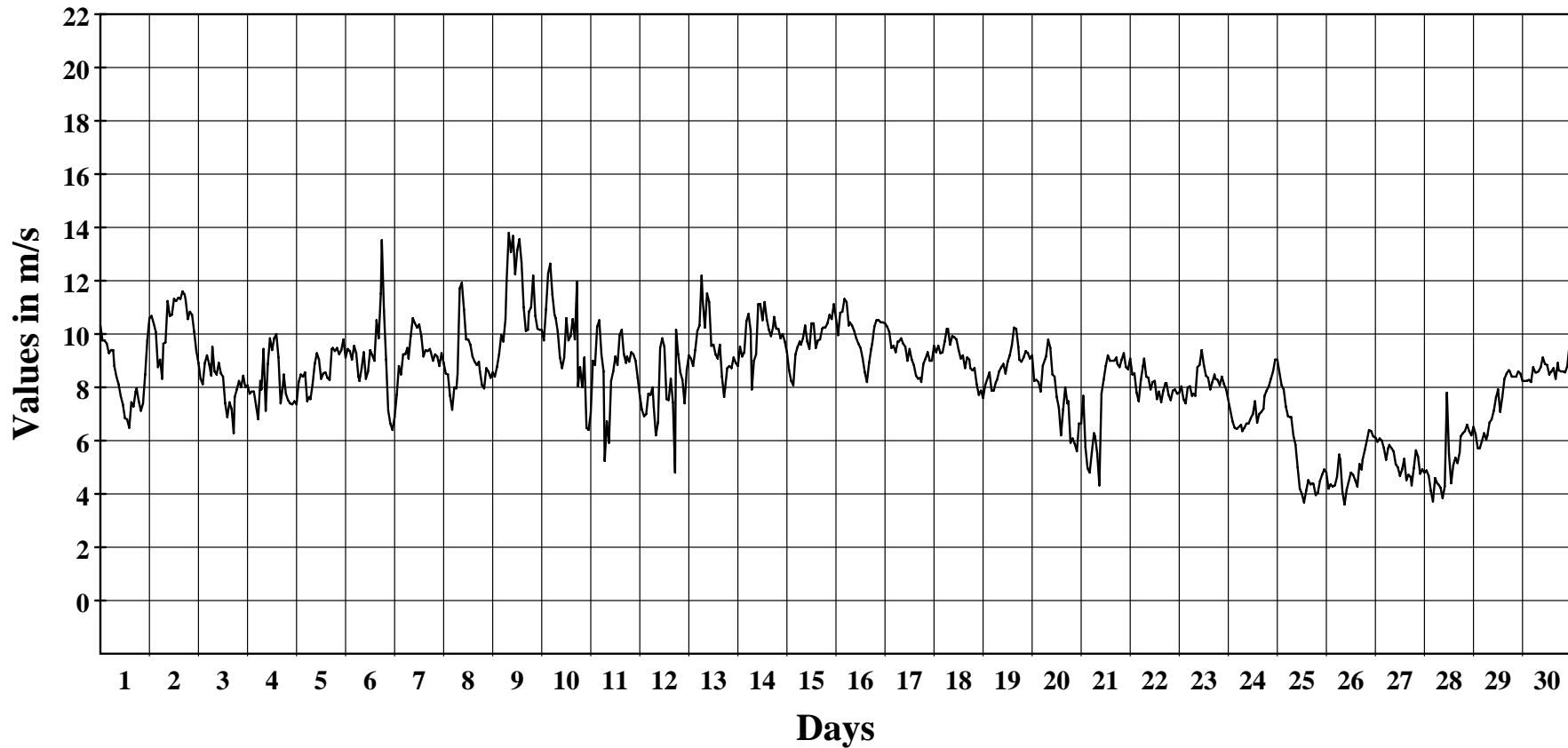
November 2012

Hourly Averages Graph (Windspeed)

SITE 8207

Wotje

Average Hourly Values



Average Value: 8.4

Site Information:

Project: Wind Monitoring
Location: NIHS Campus
Elevation: 5

Sensor on channel 1:

NRG #40 Anem. m/s
Height: 34 m
Serial #: SN: 9854

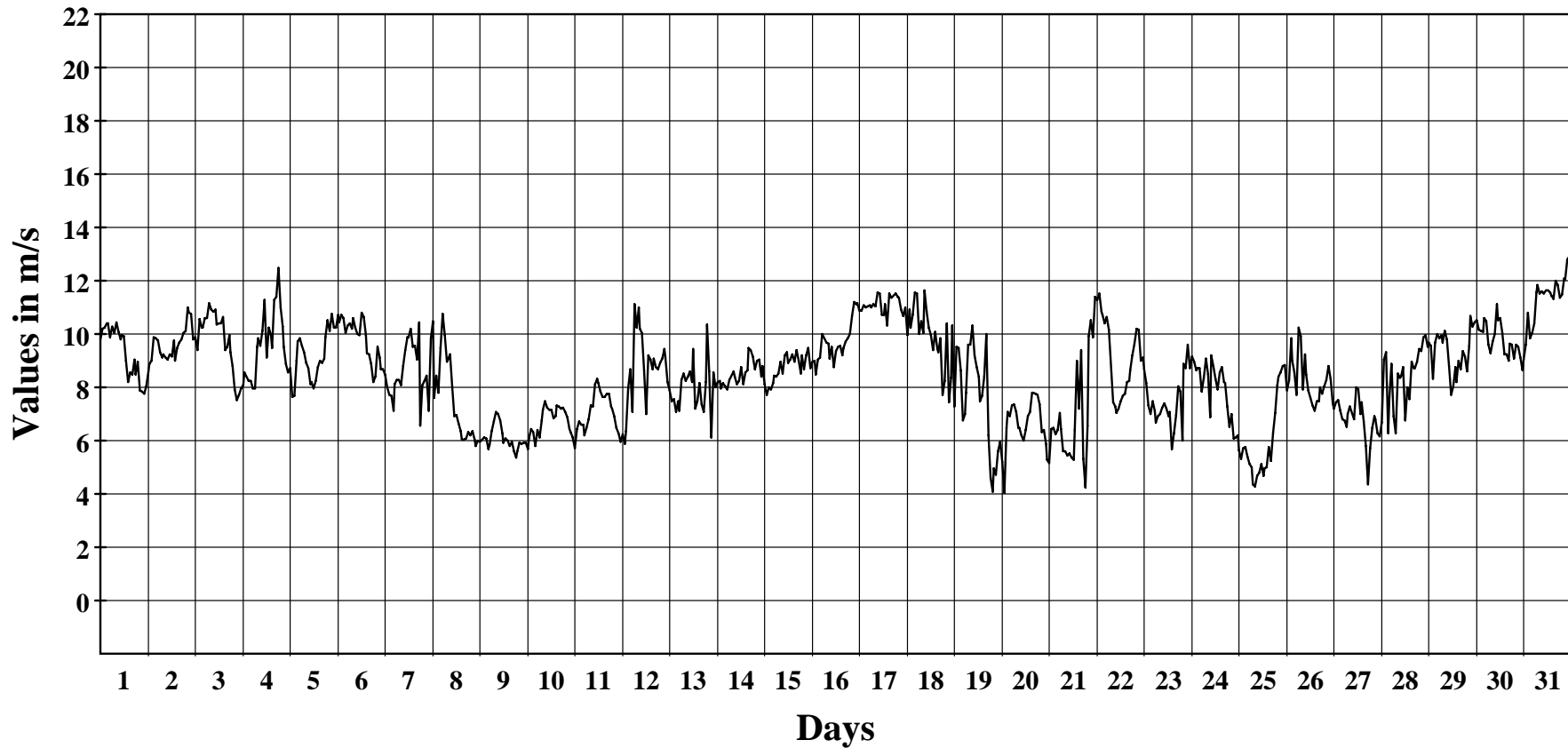
December 2012

Hourly Averages Graph (Windspeed)

SITE 8207

Wotje

Average Hourly Values



Average Value: 8.5

Site Information:

Project: Wind Monitoring
Location: NIHS Campus
Elevation: 5

Sensor on channel 1:

NRG #40 Anem. m/s
Height: 34 m
Serial #: SN: 9854

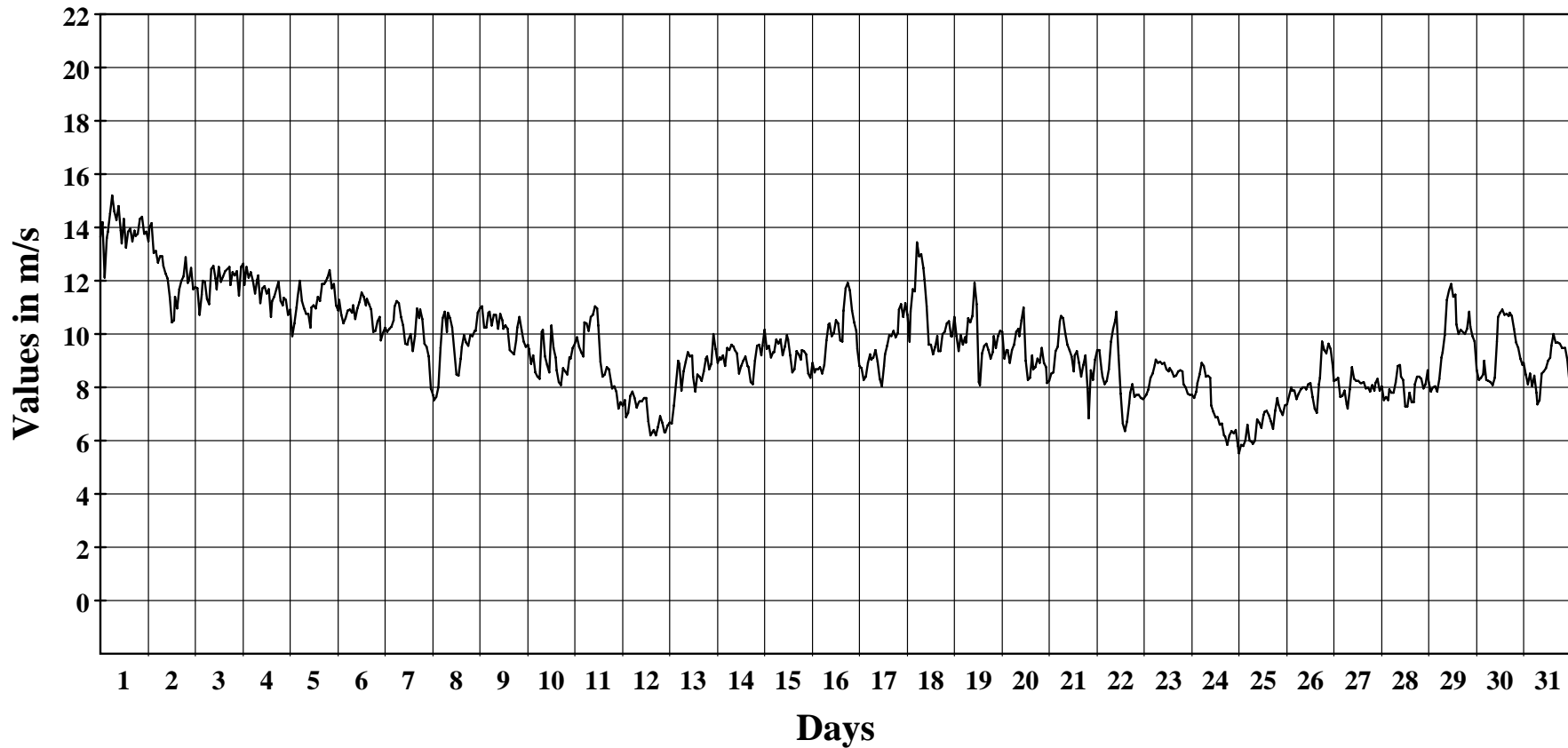
January 2013

Hourly Averages Graph (Windspeed)

SITE 8207

Wotje

Average Hourly Values



Average Value: 9.5

Site Information:

Project: Wind Monitoring
Location: NIHS Campus
Elevation: 5

Sensor on channel 1:

NRG #40 Anem. m/s
Height: 34 m
Serial #: SN: 9854

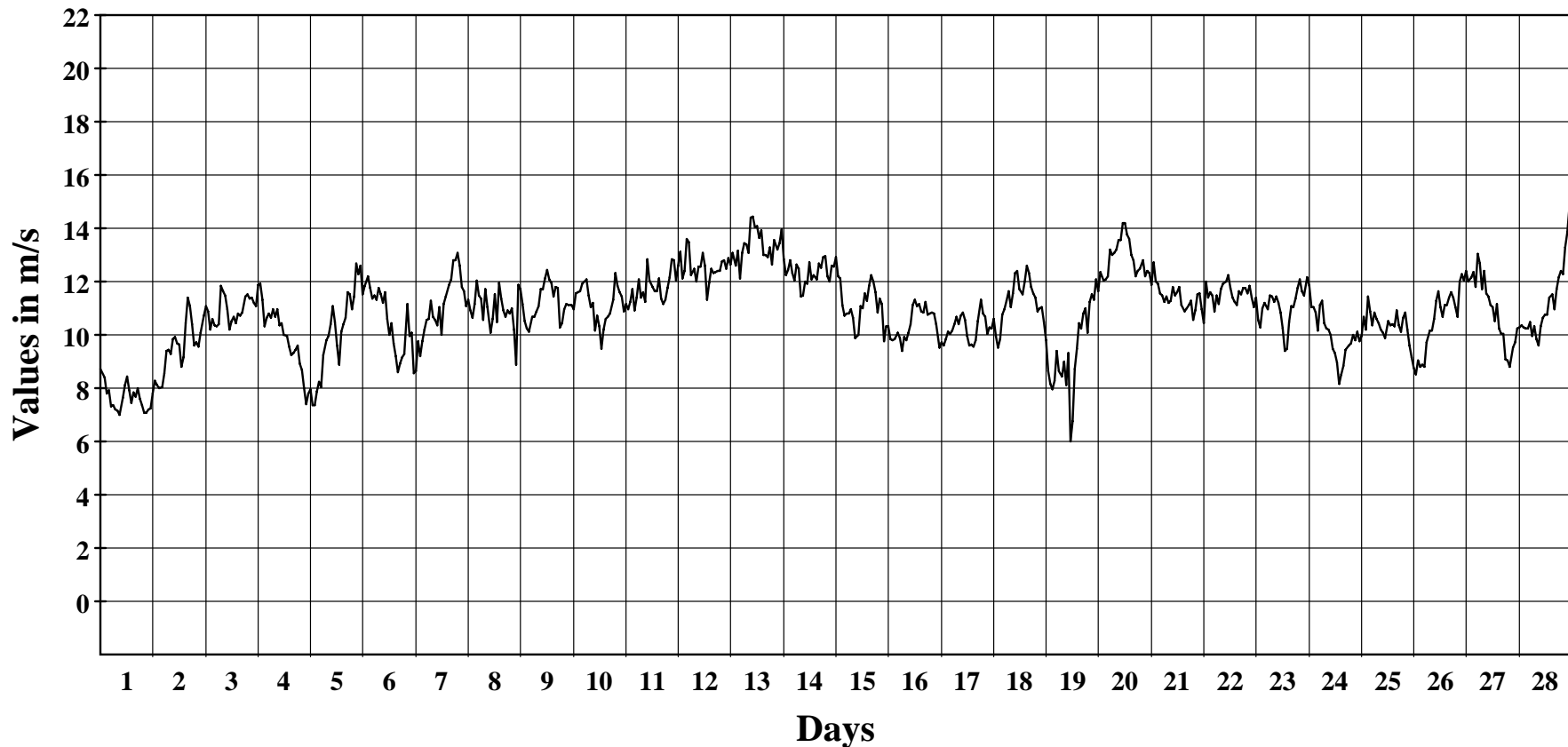
February 2013

Hourly Averages Graph (Windspeed)

SITE 8207

Wotje

Average Hourly Values



Average Value: 10.9

Site Information:

Project: Wind Monitoring
Location: NIHS Campus
Elevation: 5

Sensor on channel 1:

NRG #40 Anem. m/s
Height: 34 m
Serial #: SN: 9854

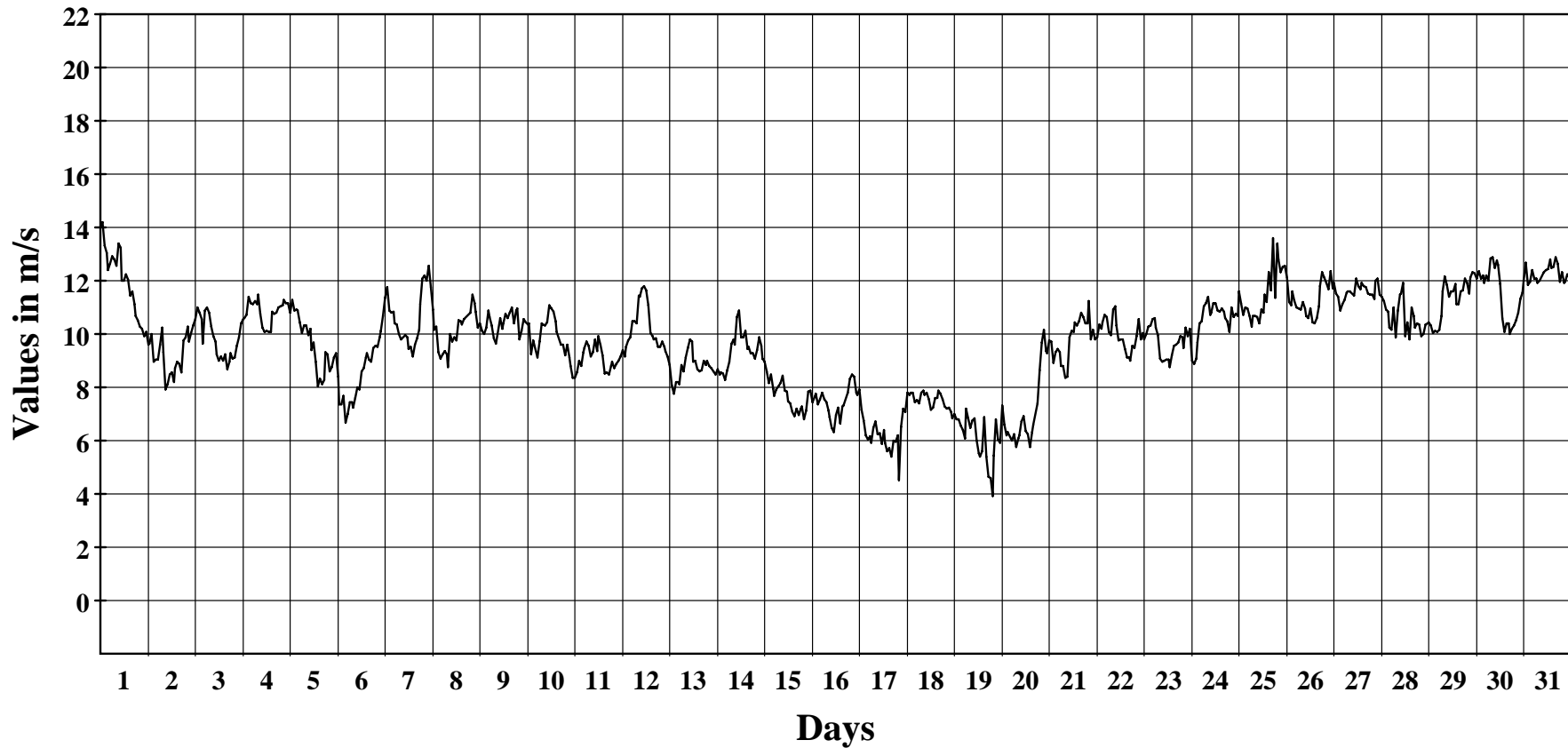
March 2013

Hourly Averages Graph (Windspeed)

SITE 8207

Wotje

Average Hourly Values



Average Value: 9.7

Site Information:

Project: Wind Monitoring
Location: NIHS Campus
Elevation: 5

Sensor on channel 1:

NRG #40 Anem. m/s
Height: 34 m
Serial #: SN: 9854

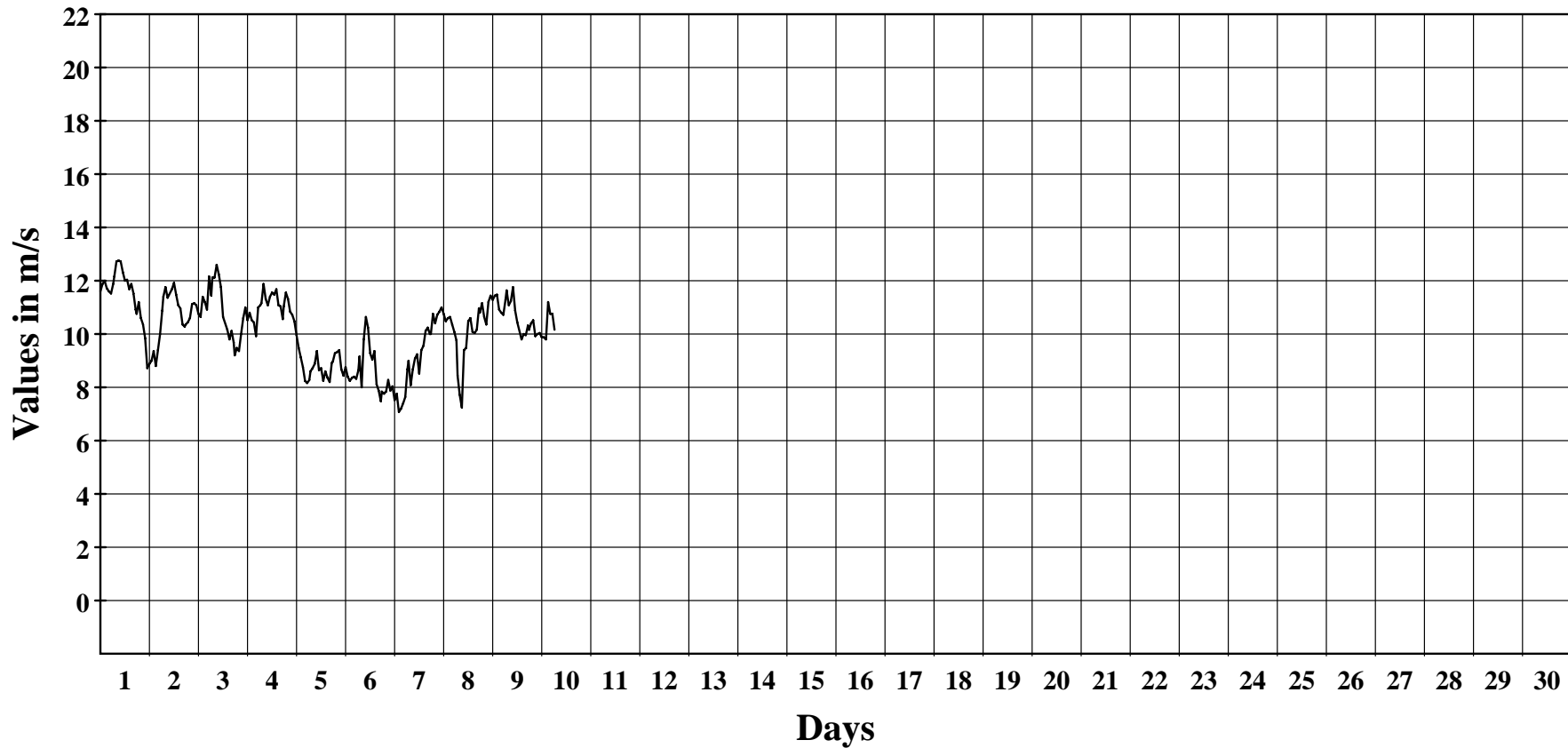
April 2013

Hourly Averages Graph (Windspeed)

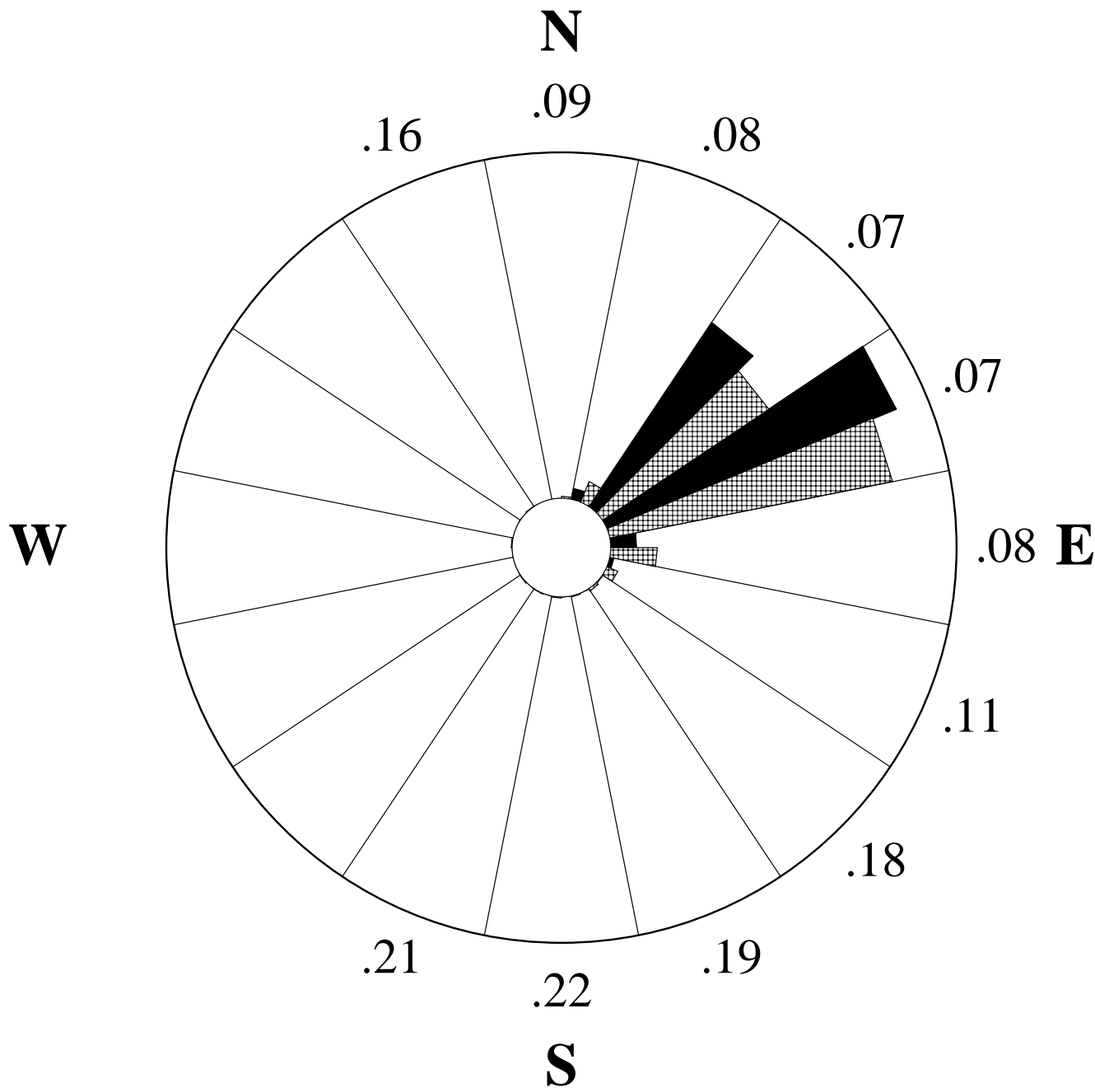
SITE 8207

Wotje

Average Hourly Values



Average Value: 10.1



9/20/2012 to 4/10/2013

Wind Rose (NE)

SITE 8207

Wotje

Site Information:

Project: Wind Monitoring

Location: NIHS Campus

Elevation: 5

Anemometer on channel 1:

NRG #40 Anem. m/s

Height: 34 m

Serial #: SN: 9854

Vane on channel 7:

#200P Wind Vane

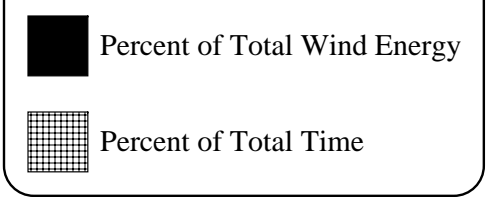
Height: 32 m

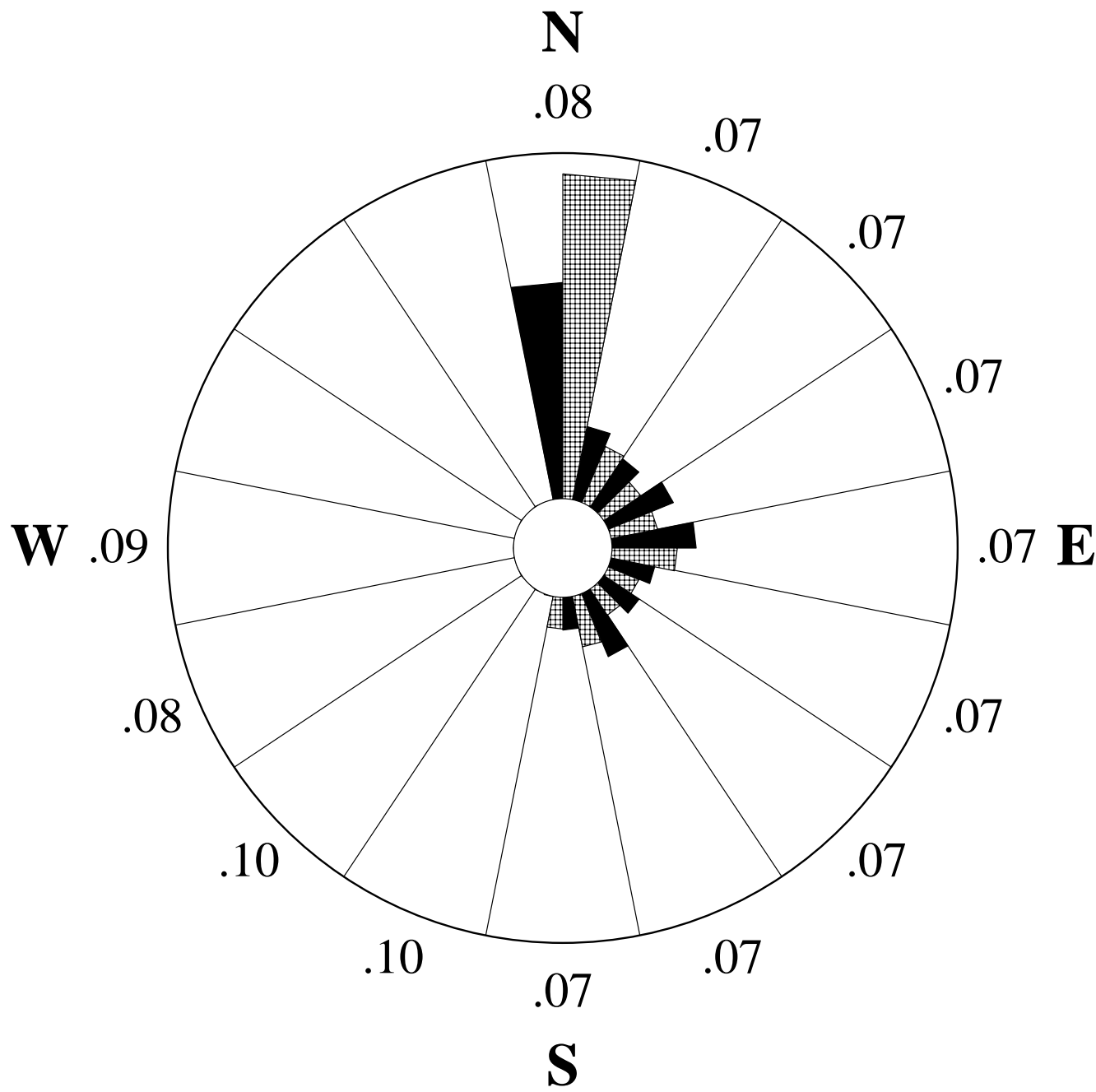
Serial #: SN:

Outer Numbers are Average TIs for speeds greater than 4.5 m/s

Inner Circle = 0%

Outer Circle = 60%





9/20/2012 to 4/10/2013

Wind Rose Ch (N)

SITE 8207

Wotje

Site Information:

Project: Wind Monitoring

Location: NIHS Campus

Elevation: 5

Anemometer on channel 1:

NRG #40 Anem. m/s

Height: 34 m

Serial #: SN: 9854

Vane on channel 8:

#200P Wind Vane

Height: 0

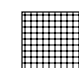
Serial #: SN:

Outer Numbers are Average TIs for speeds greater than 4.5 m/s

Inner Circle = 0%

Outer Circle = 50%

 Percent of Total Wind Energy

 Percent of Total Time

Site Information:

Project: Wind Monitoring
Location: NIHS Campus
Elevation: 5

Sensor on channel 9:

NRG #110S Temp C
Height: 3 m
Serial #: SN:

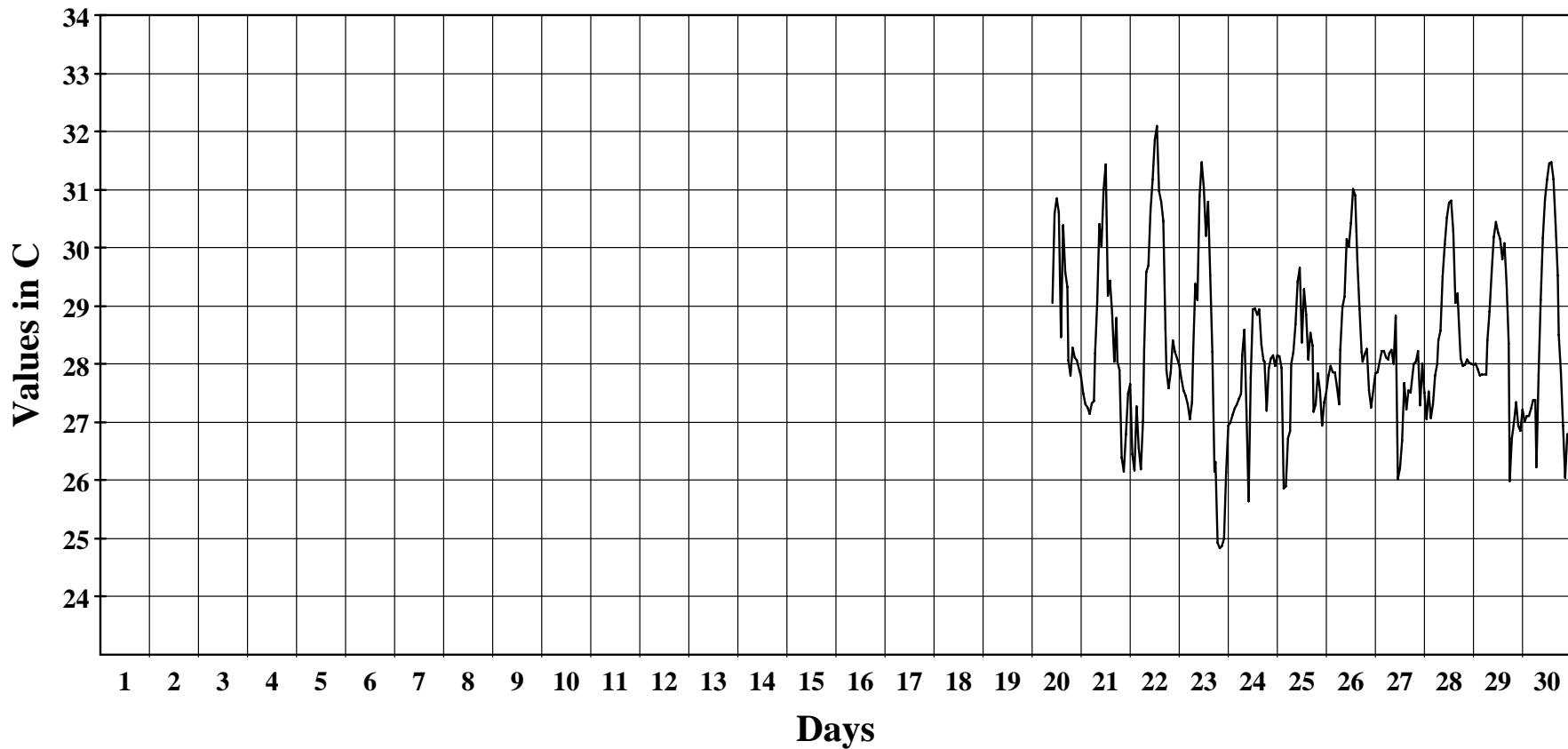
September 2012

Hourly Averages Graph (Temperature)

SITE 8207

Wotje

Average Hourly Values



Average Value: 28.3

Site Information:

Project: Wind Monitoring
Location: NIHS Campus
Elevation: 5

Sensor on channel 9:

NRG #110S Temp C
Height: 3 m
Serial #: SN:

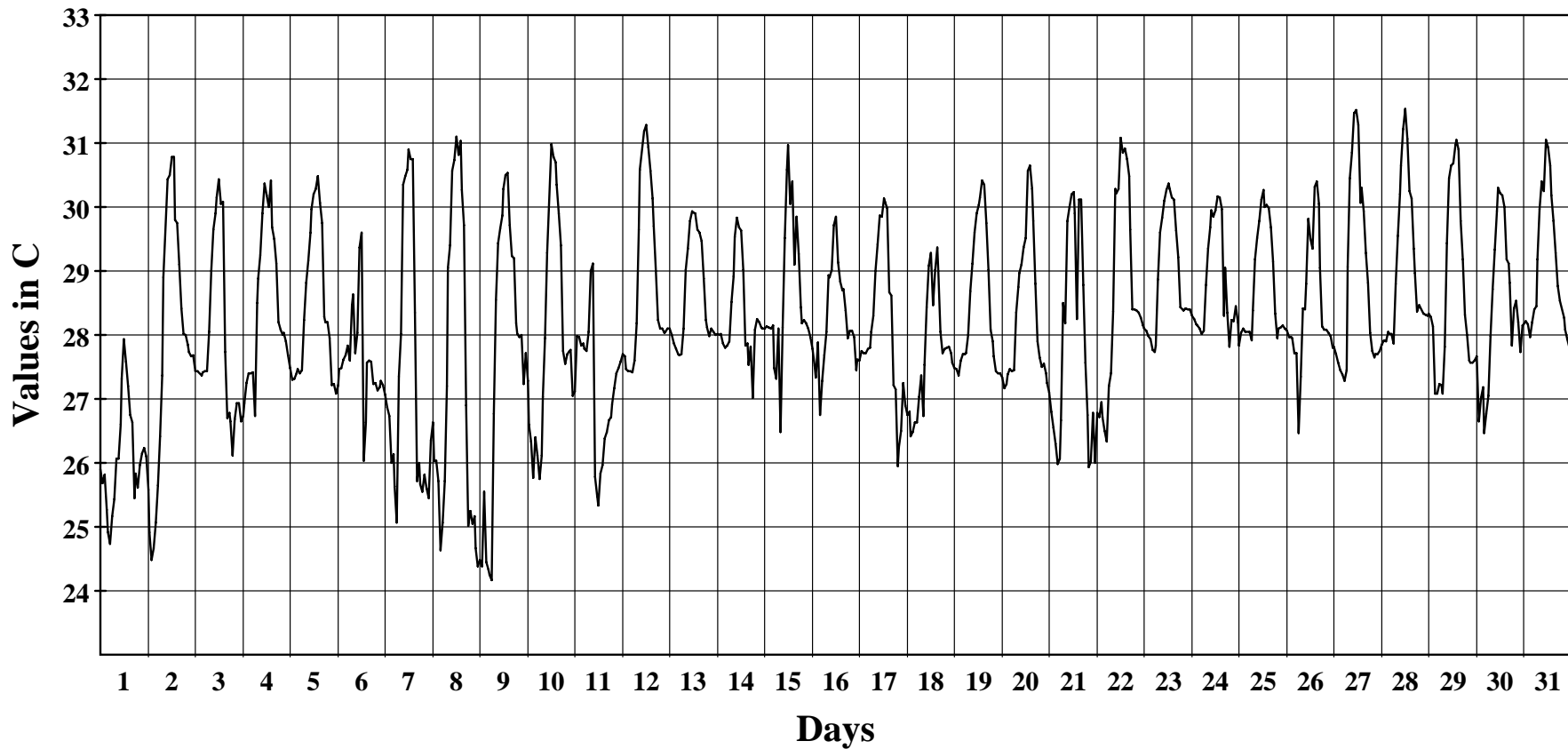
October 2012

Hourly Averages Graph (Temperature)

SITE 8207

Wotje

Average Hourly Values



Average Value: 28.2

Site Information:

Project: Wind Monitoring
Location: NIHS Campus
Elevation: 5

Sensor on channel 9:

NRG #110S Temp C
Height: 3 m
Serial #: SN:

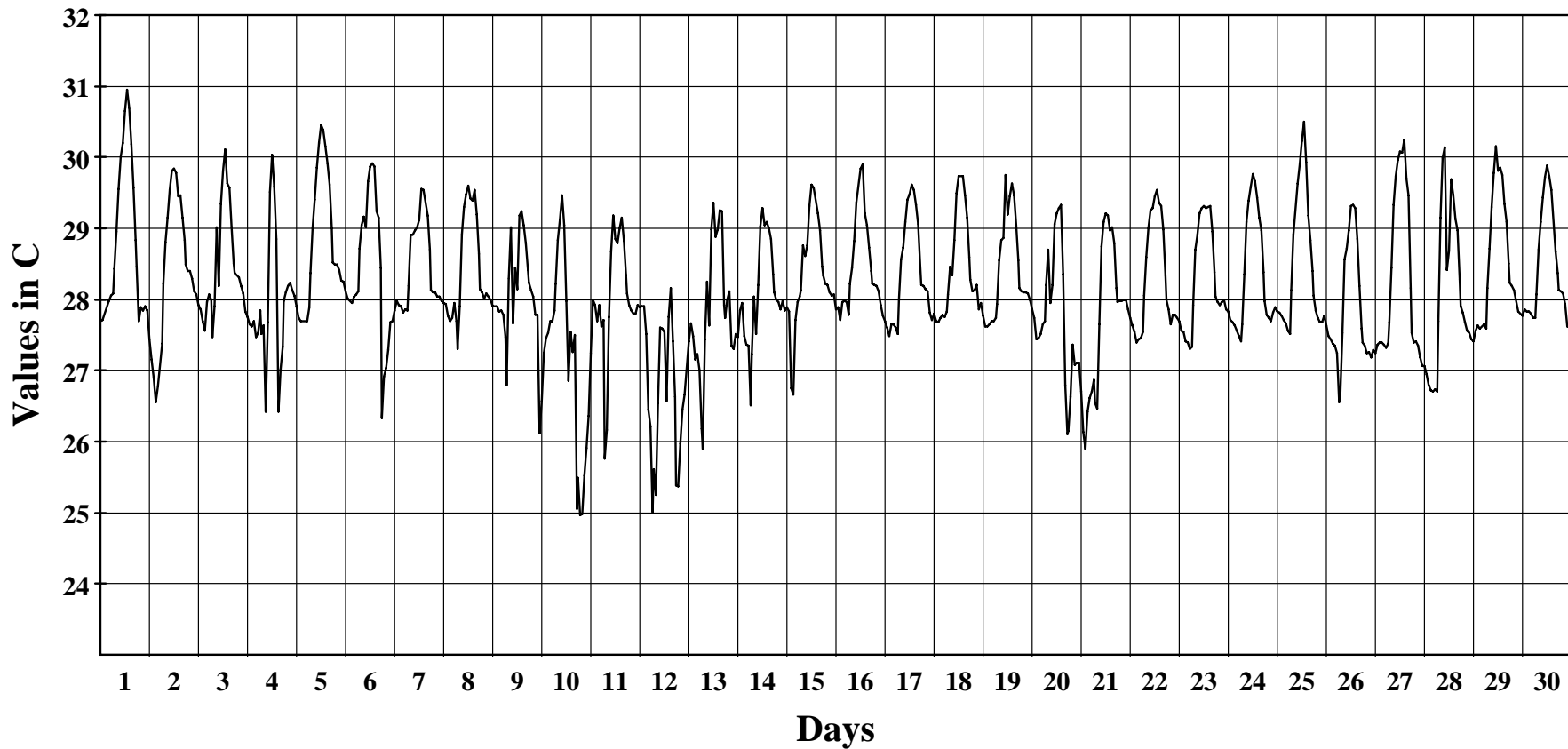
November 2012

Hourly Averages Graph (Temperature)

SITE 8207

Wotje

Average Hourly Values



Average Value: 28.2

Site Information:

Project: Wind Monitoring
Location: NIHS Campus
Elevation: 5

Sensor on channel 9:

NRG #110S Temp C
Height: 3 m
Serial #: SN:

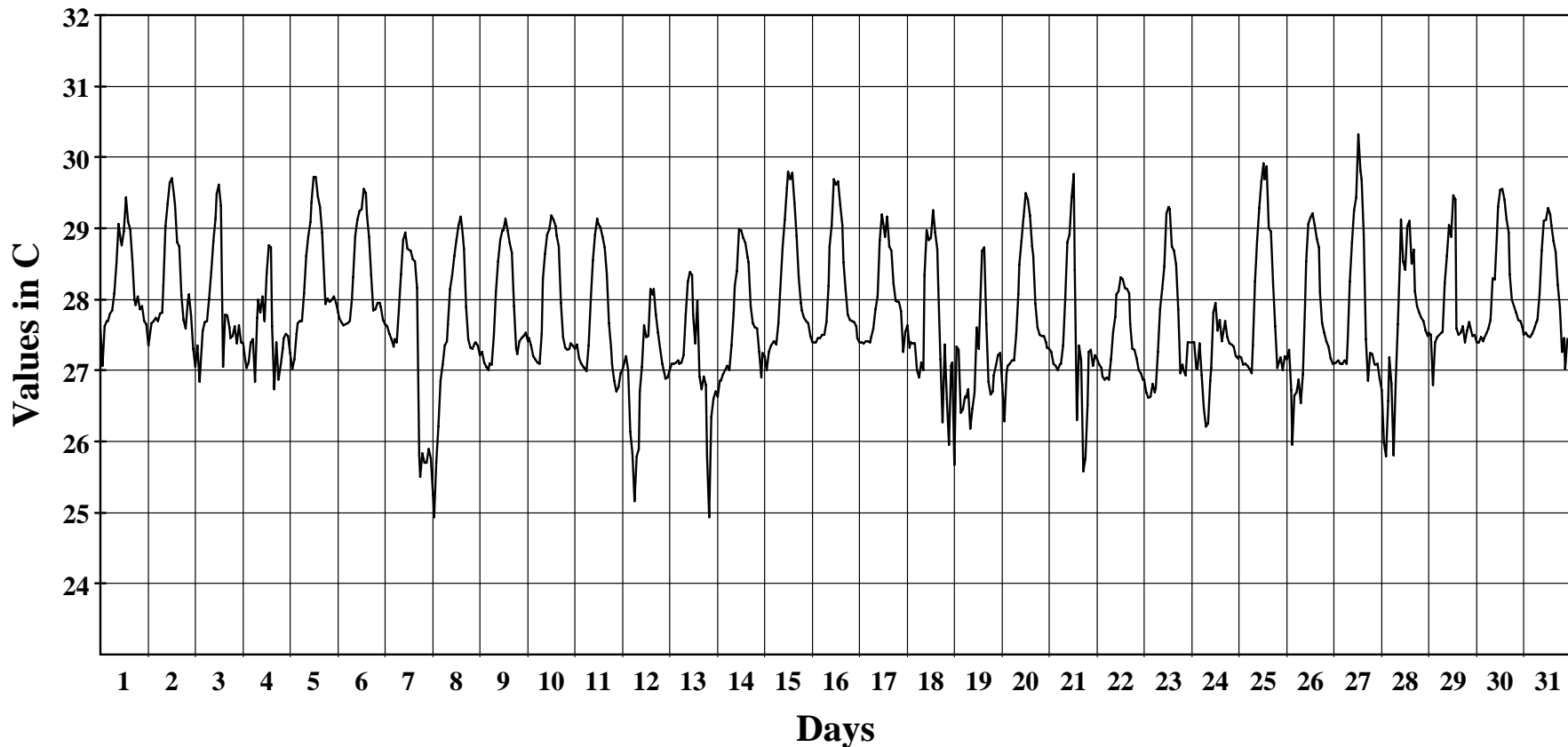
December 2012

Hourly Averages Graph (Temperature)

SITE 8207

Wotje

Average Hourly Values



Average Value: 27.8

Site Information:

Project: Wind Monitoring
Location: NIHS Campus
Elevation: 5

Sensor on channel 9:

NRG #110S Temp C
Height: 3 m
Serial #: SN:

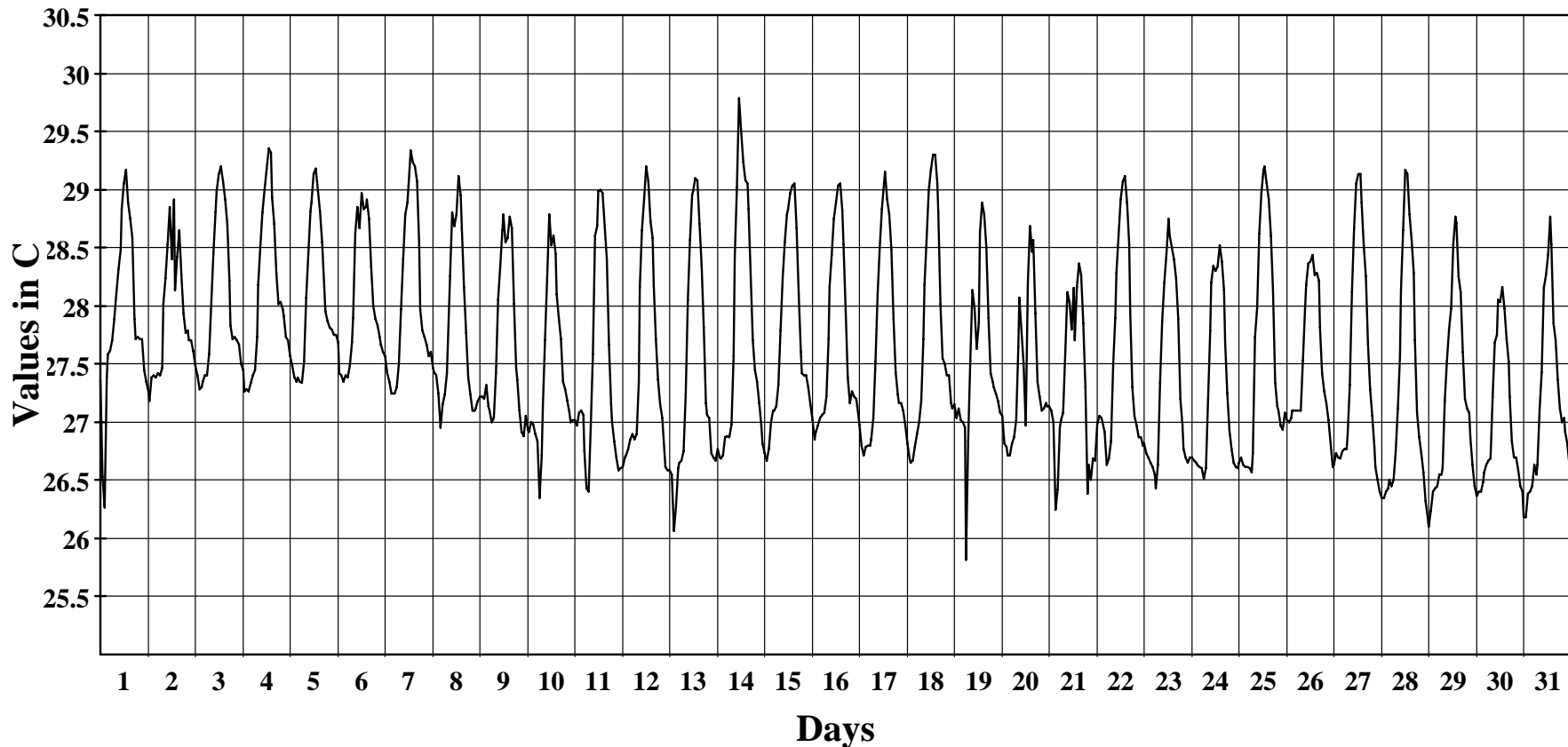
January 2013

Hourly Averages Graph (Temperature)

SITE 8207

Wotje

Average Hourly Values



Average Value: 27.6

Site Information:

Project: Wind Monitoring
Location: NIHS Campus
Elevation: 5

Sensor on channel 9:

NRG #110S Temp C
Height: 3 m
Serial #: SN:

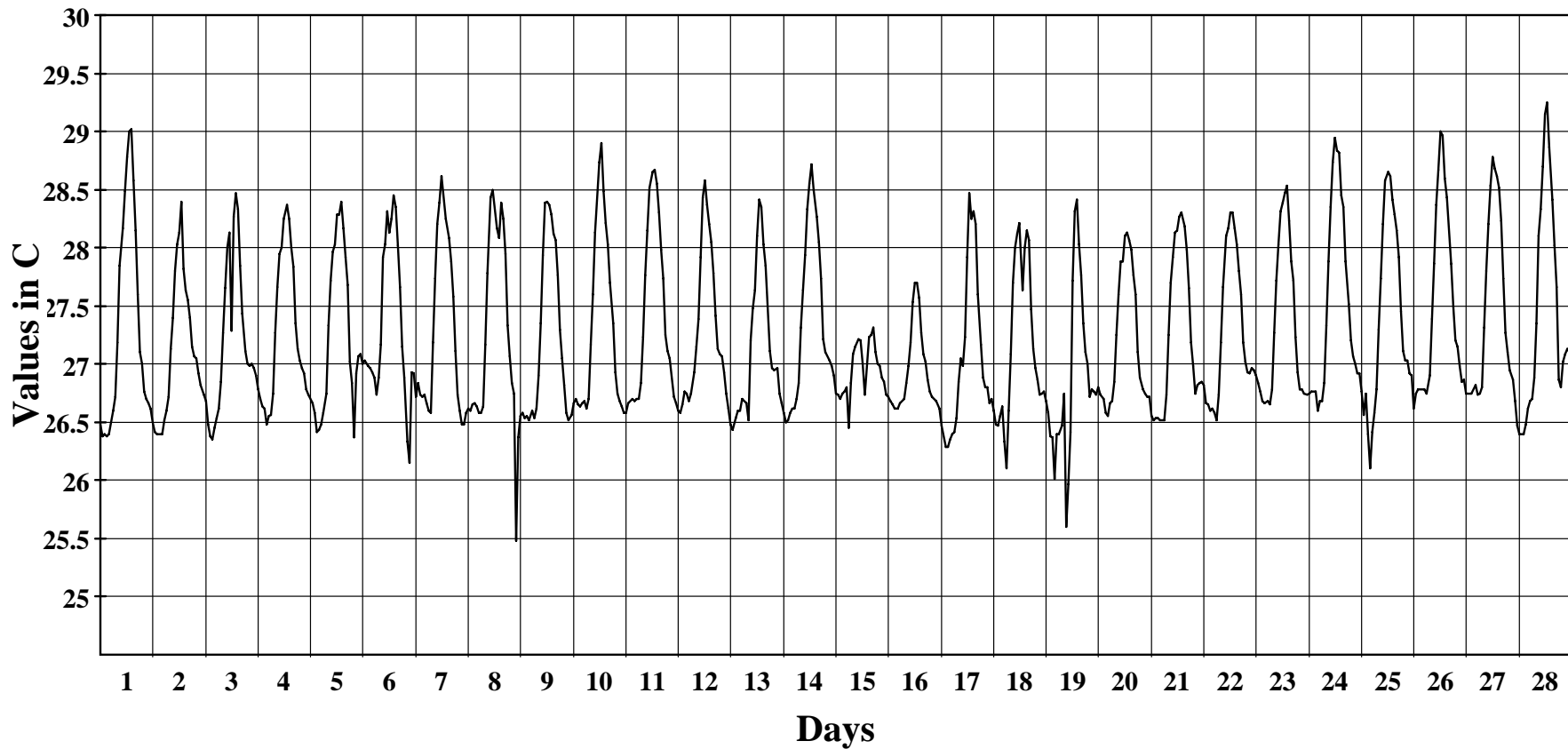
February 2013

Hourly Averages Graph (Temperature)

SITE 8207

Wotje

Average Hourly Values



Average Value: 27.2

Site Information:

Project: Wind Monitoring
Location: NIHS Campus
Elevation: 5

Sensor on channel 9:

NRG #110S Temp C
Height: 3 m
Serial #: SN:

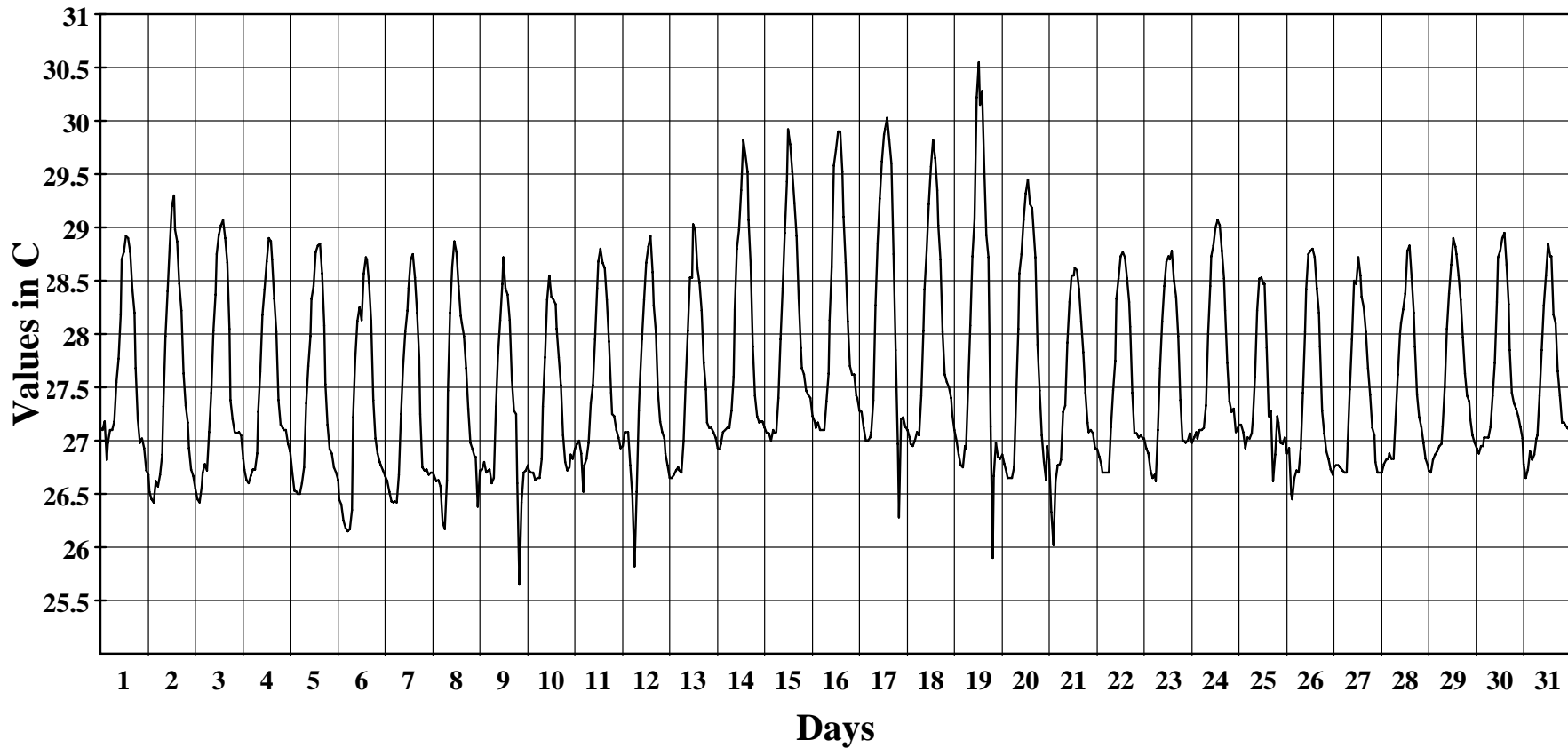
March 2013

Hourly Averages Graph (Temperature)

SITE 8207

Wotje

Average Hourly Values



Average Value: 27.6

Site Information:

Project: Wind Monitoring
Location: NIHS Campus
Elevation: 5

Sensor on channel 9:

NRG #110S Temp C
Height: 3 m
Serial #: SN:

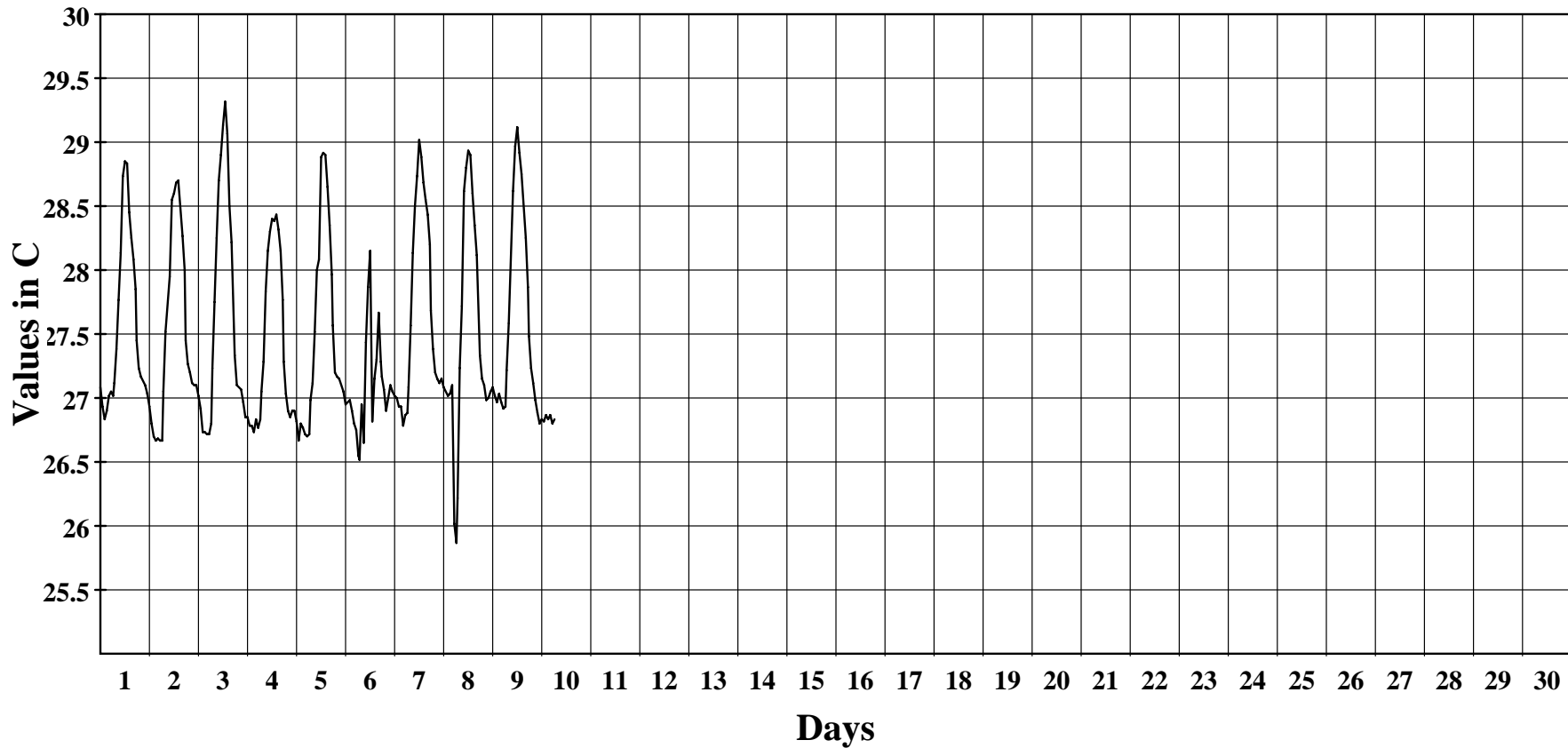
April 2013

Hourly Averages Graph (Temperature)

SITE 8207

Wotje

Average Hourly Values



Average Value: 27.5

Site Information:

Project: Wind Monitoring
Location: NIHS Campus
Elevation: 5

Sensor on channel 10:

Licor Pyran W/sqm
Height: 3 m
Serial #: SN:

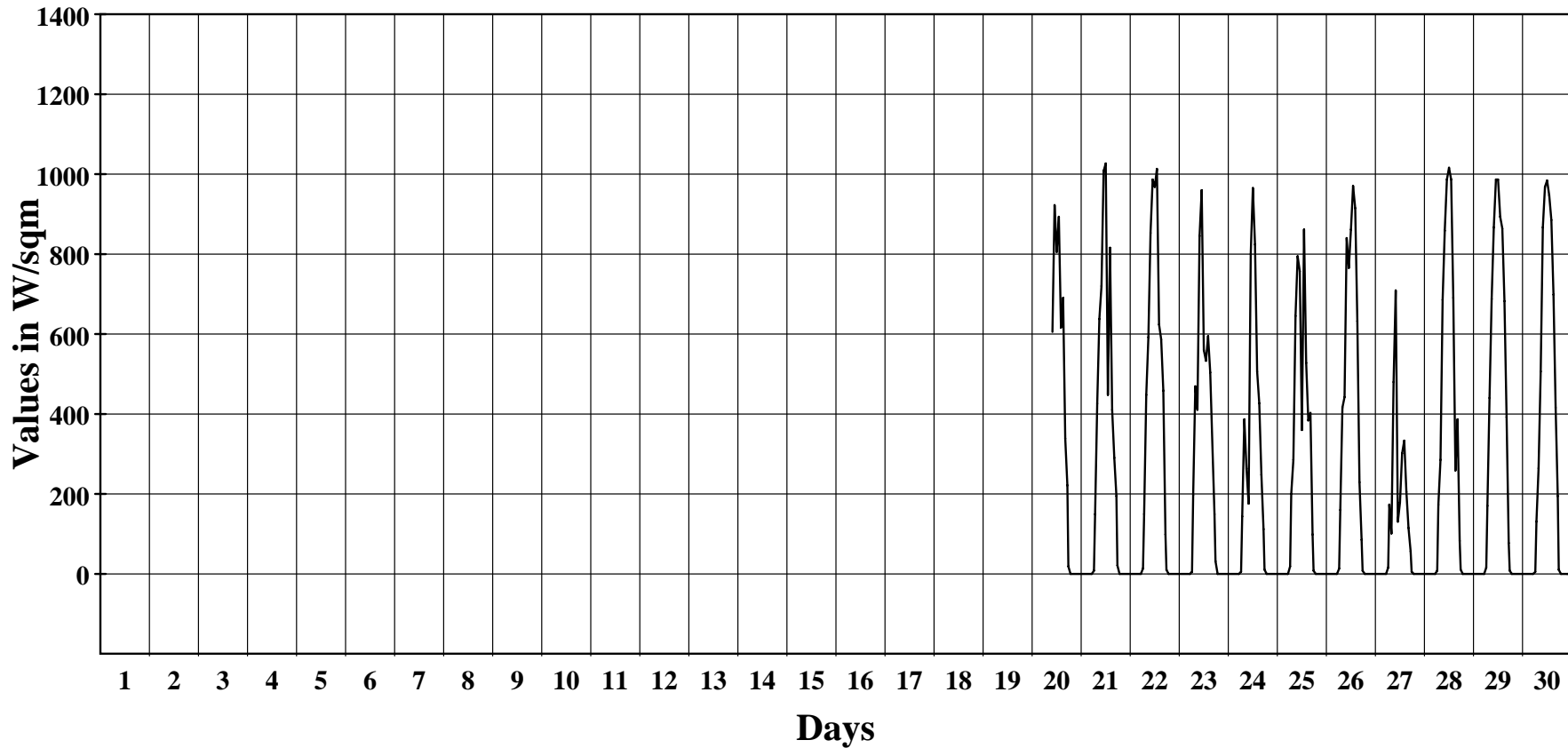
September 2012

Hourly Averages Graph (Pyranometer)

SITE 8207

Wotje

Average Hourly Values



Average Value: 249.6

Site Information:

Project: Wind Monitoring
Location: NIHS Campus
Elevation: 5

Sensor on channel 10:

Licor Pyran W/sqm
Height: 3 m
Serial #: SN:

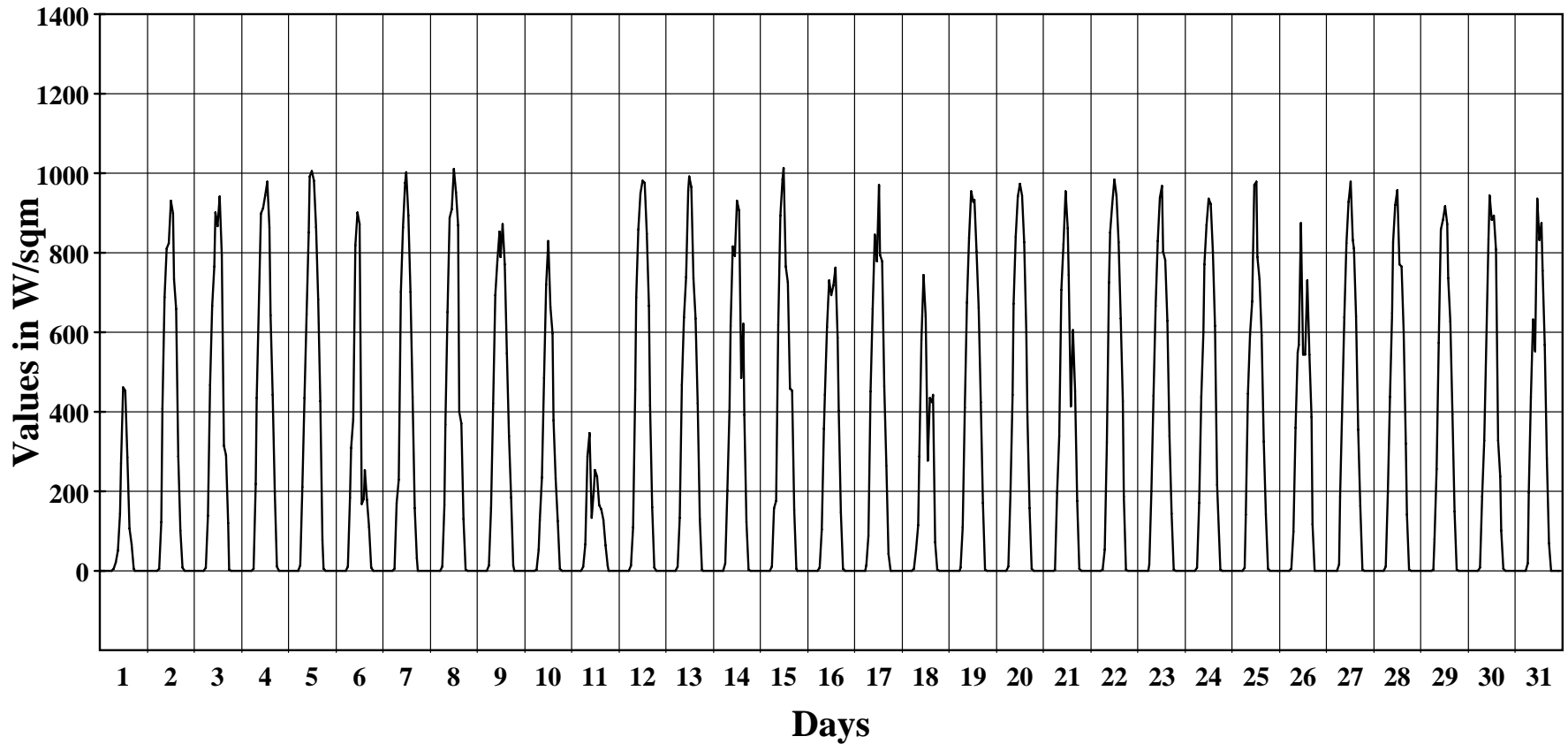
October 2012

Hourly Averages Graph (Pyranometer)

SITE 8207

Wotje

Average Hourly Values



Average Value: 249.7

Site Information:

Project: Wind Monitoring
Location: NIHS Campus
Elevation: 5

Sensor on channel 10:

Licor Pyran W/sqm
Height: 3 m
Serial #: SN:

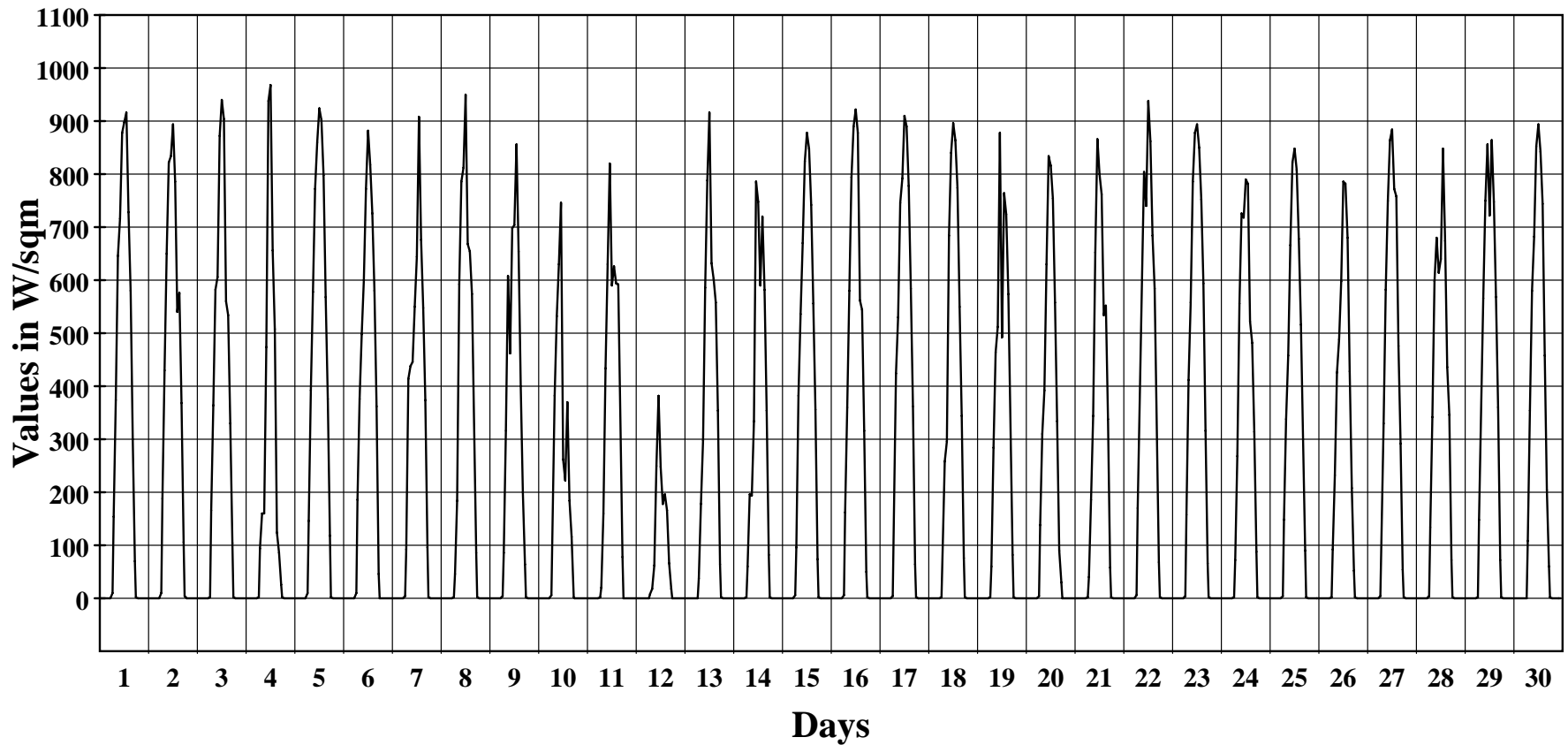
November 2012

Hourly Averages Graph (Pyranometer)

SITE 8207

Wotje

Average Hourly Values



Average Value: 223.7

Site Information:

Project: Wind Monitoring
Location: NIHS Campus
Elevation: 5

Sensor on channel 10:

Licor Pyran W/sqm
Height: 3 m
Serial #: SN:

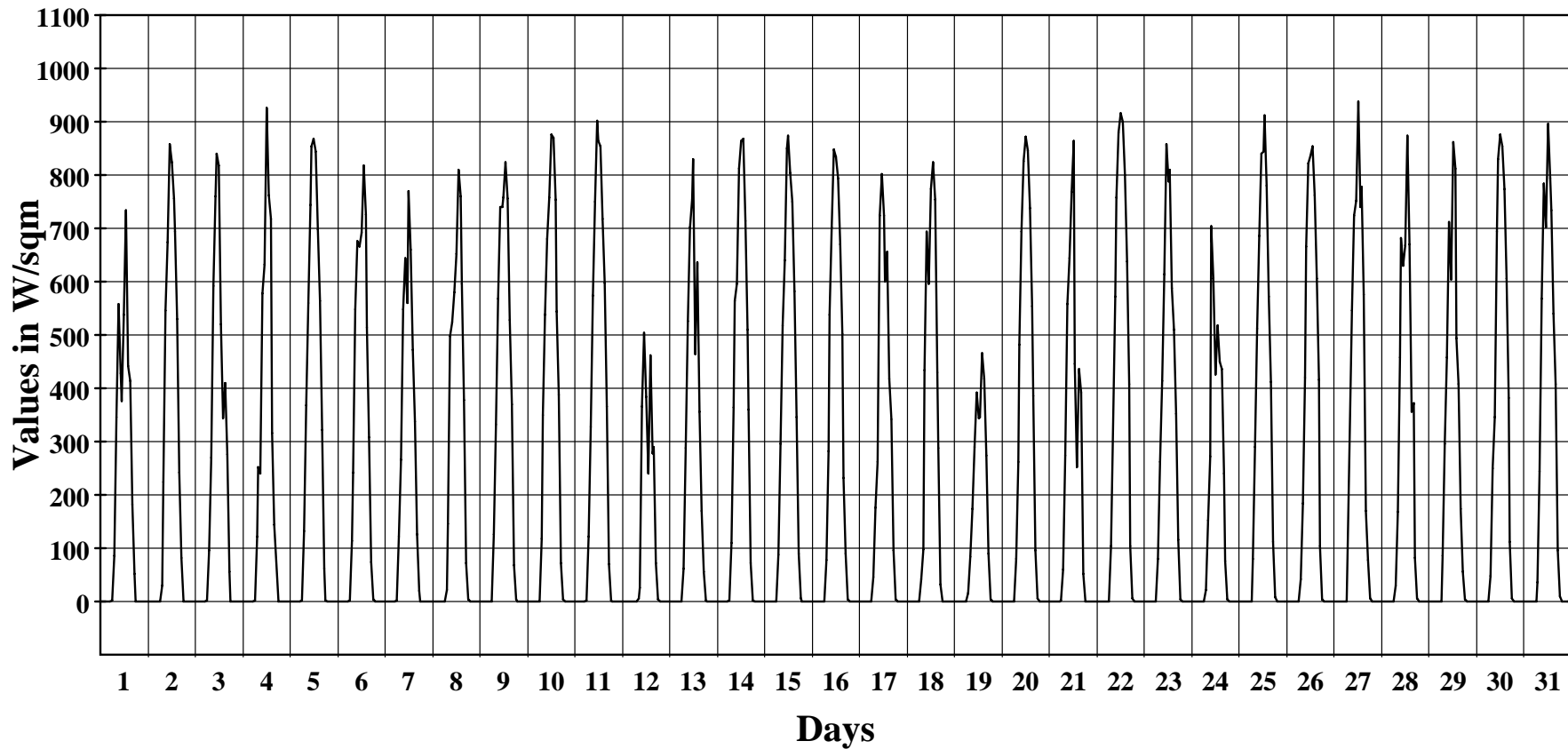
December 2012

Hourly Averages Graph (Pyranometer)

SITE 8207

Wotje

Average Hourly Values



Average Value: 216.5

Site Information:

Project: Wind Monitoring
Location: NIHS Campus
Elevation: 5

Sensor on channel 10:

Licor Pyran W/sqm
Height: 3 m
Serial #: SN:

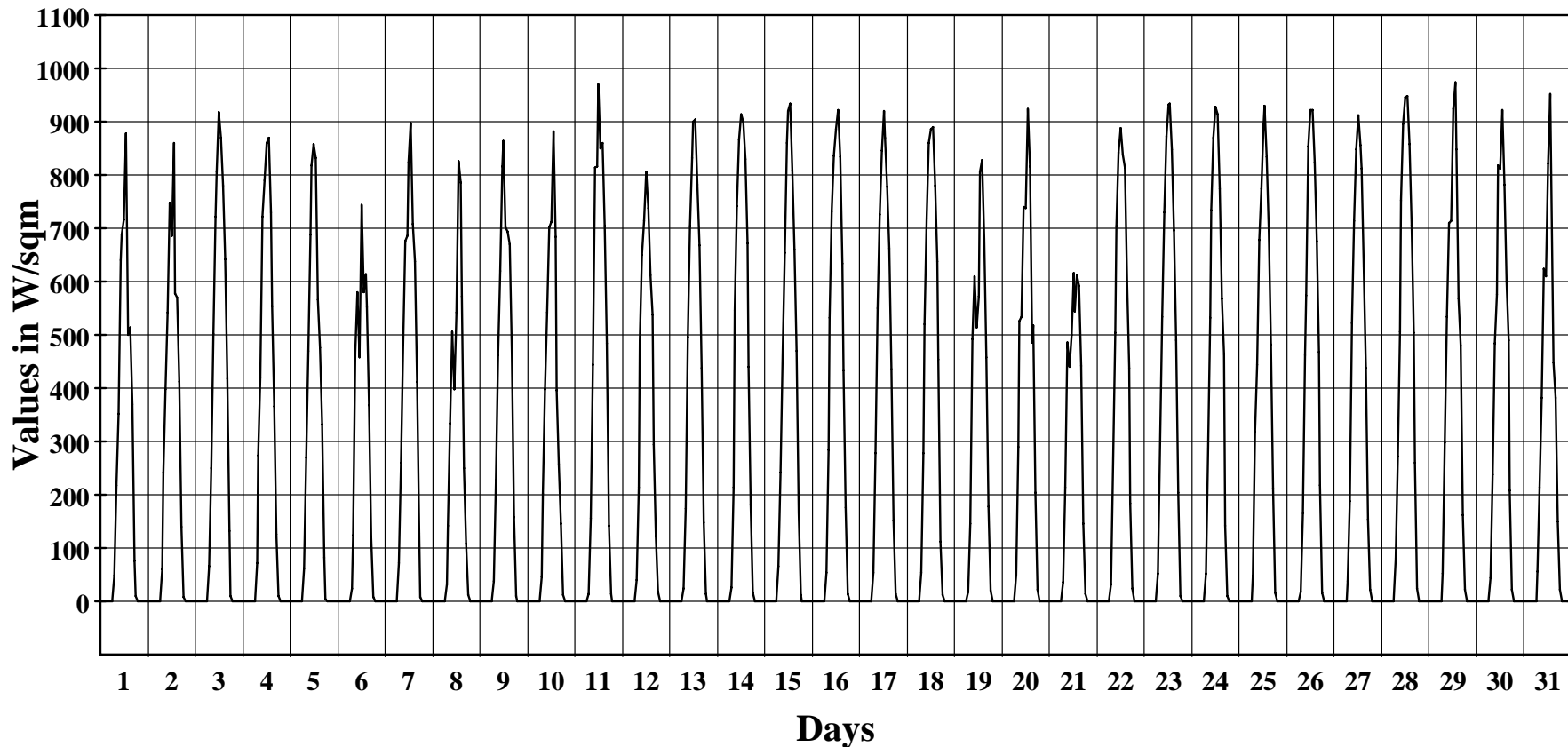
January 2013

Hourly Averages Graph (Pyranometer)

SITE 8207

Wotje

Average Hourly Values



Average Value: 242.1

Site Information:

Project: Wind Monitoring
Location: NIHS Campus
Elevation: 5

Sensor on channel 10:

Licor Pyran W/sqm
Height: 3 m
Serial #: SN:

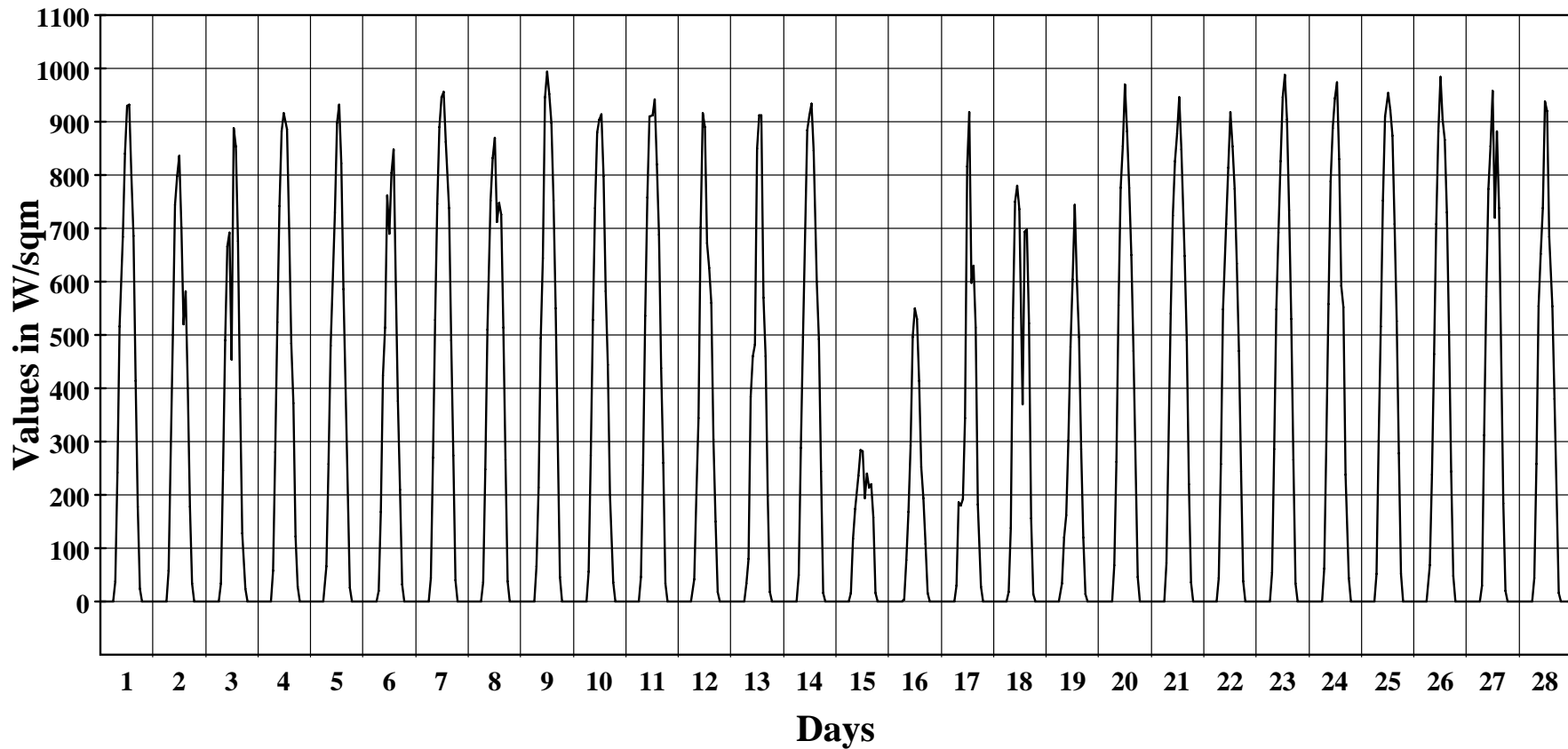
February 2013

Hourly Averages Graph (Pyranometer)

SITE 8207

Wotje

Average Hourly Values



Average Value: 242.8

Site Information:

Project: Wind Monitoring
Location: NIHS Campus
Elevation: 5

Sensor on channel 10:

Licor Pyran W/sqm
Height: 3 m
Serial #: SN:

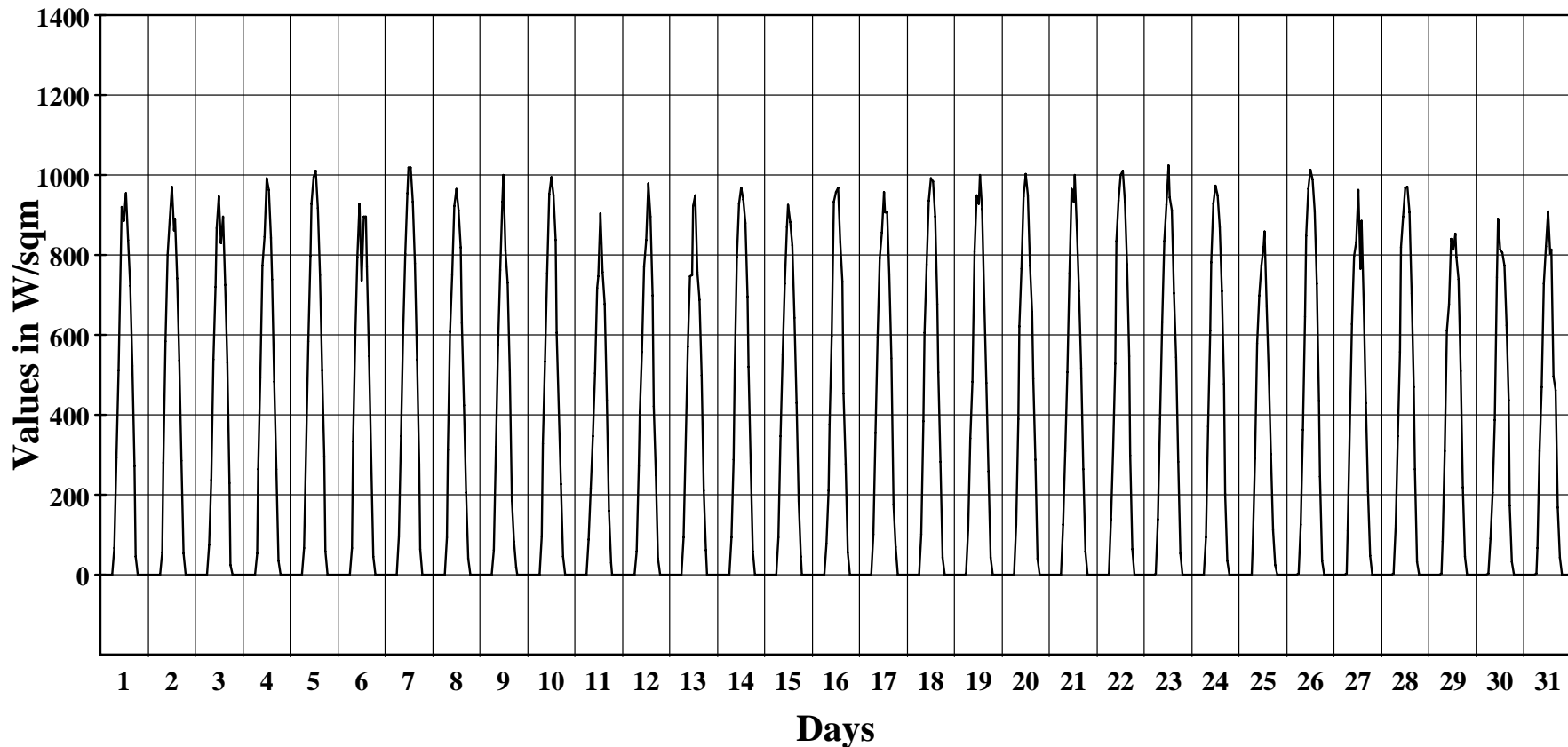
March 2013

Hourly Averages Graph (Pyranometer)

SITE 8207

Wotje

Average Hourly Values



Average Value: 280.6

Site Information:

Project: Wind Monitoring
Location: NIHS Campus
Elevation: 5

Sensor on channel 10:

Licor Pyran W/sqm
Height: 3 m
Serial #: SN:

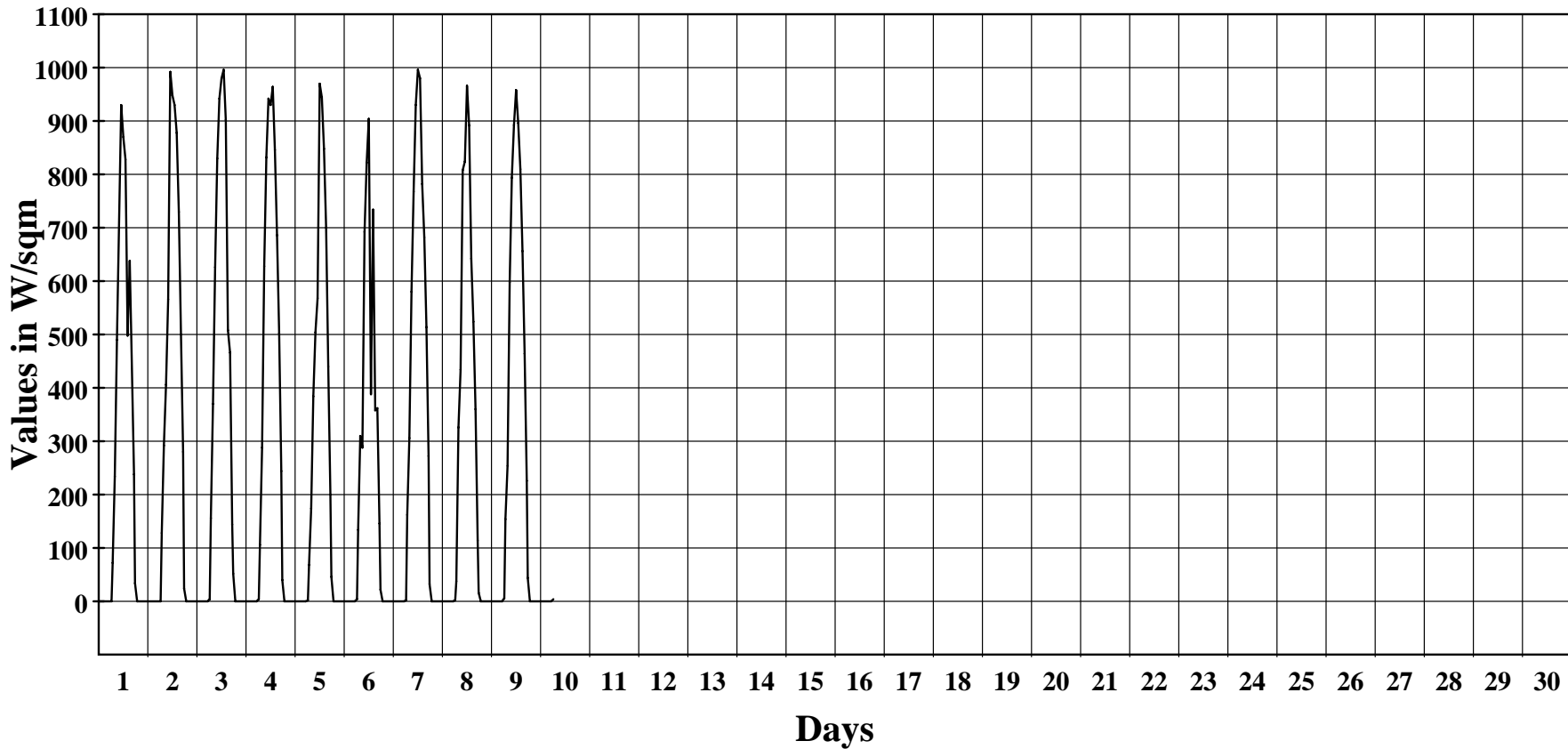
April 2013

Hourly Averages Graph (Pyranometer)

SITE 8207

Wotje

Average Hourly Values



Average Value: 257.2

Site Information:

Project: Wind Monitoring
Location: NIHS Campus
Elevation: 5

Sensor on channel 11:

BP-20 Barom. mb
Height: 3 m
Serial #: SN:

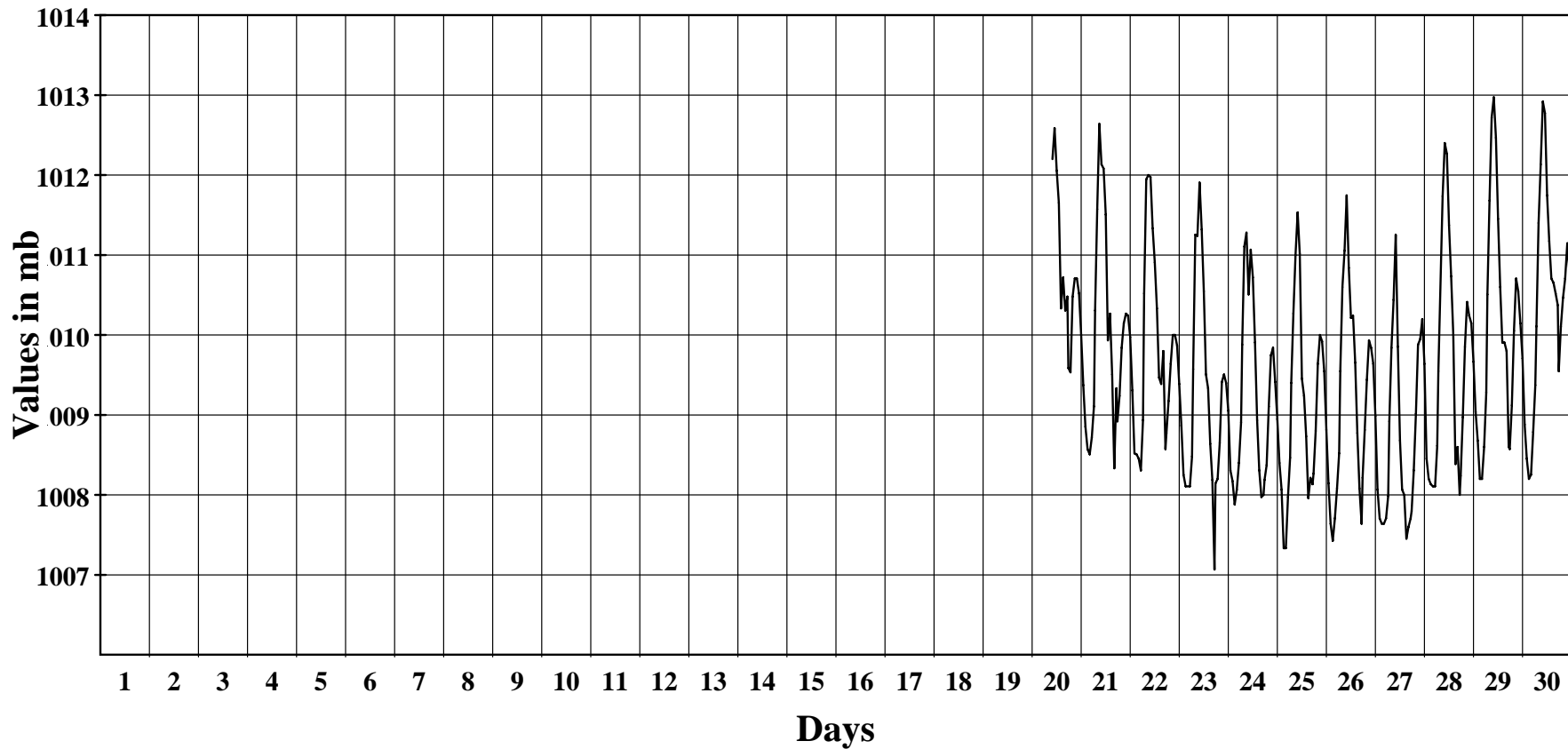
September 2012

Hourly Averages Graph (Pressure Sensor)

SITE 8207

Wotje

Average Hourly Values



Average Value: 1009.6

Site Information:

Project: Wind Monitoring
Location: NIHS Campus
Elevation: 5

Sensor on channel 11:

BP-20 Barom. mb
Height: 3 m
Serial #: SN:

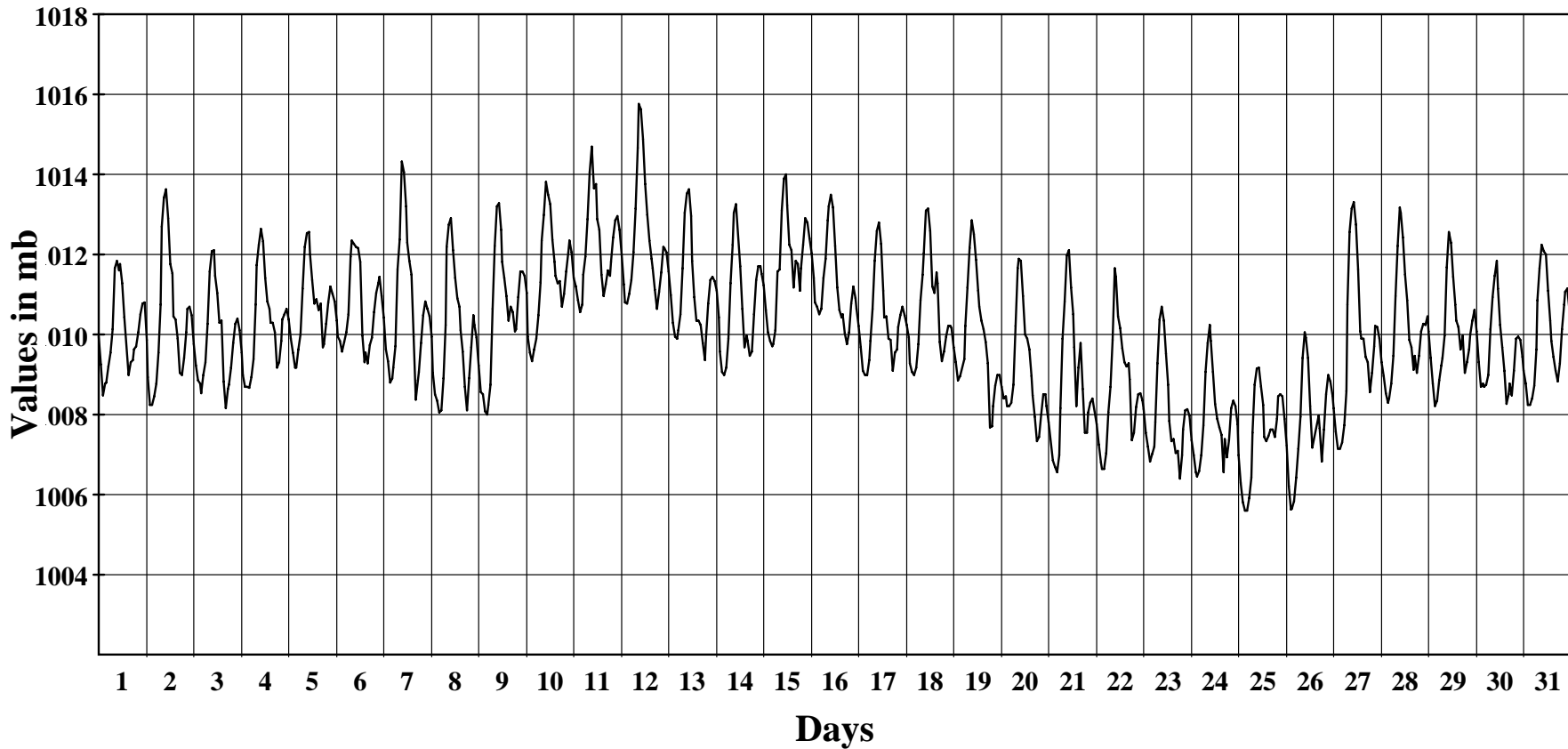
October 2012

Hourly Averages Graph (Pressure Sensor)

SITE 8207

Wotje

Average Hourly Values



Average Value: 1010.1

Site Information:

Project: Wind Monitoring
Location: NIHS Campus
Elevation: 5

Sensor on channel 11:

BP-20 Barom. mb
Height: 3 m
Serial #: SN:

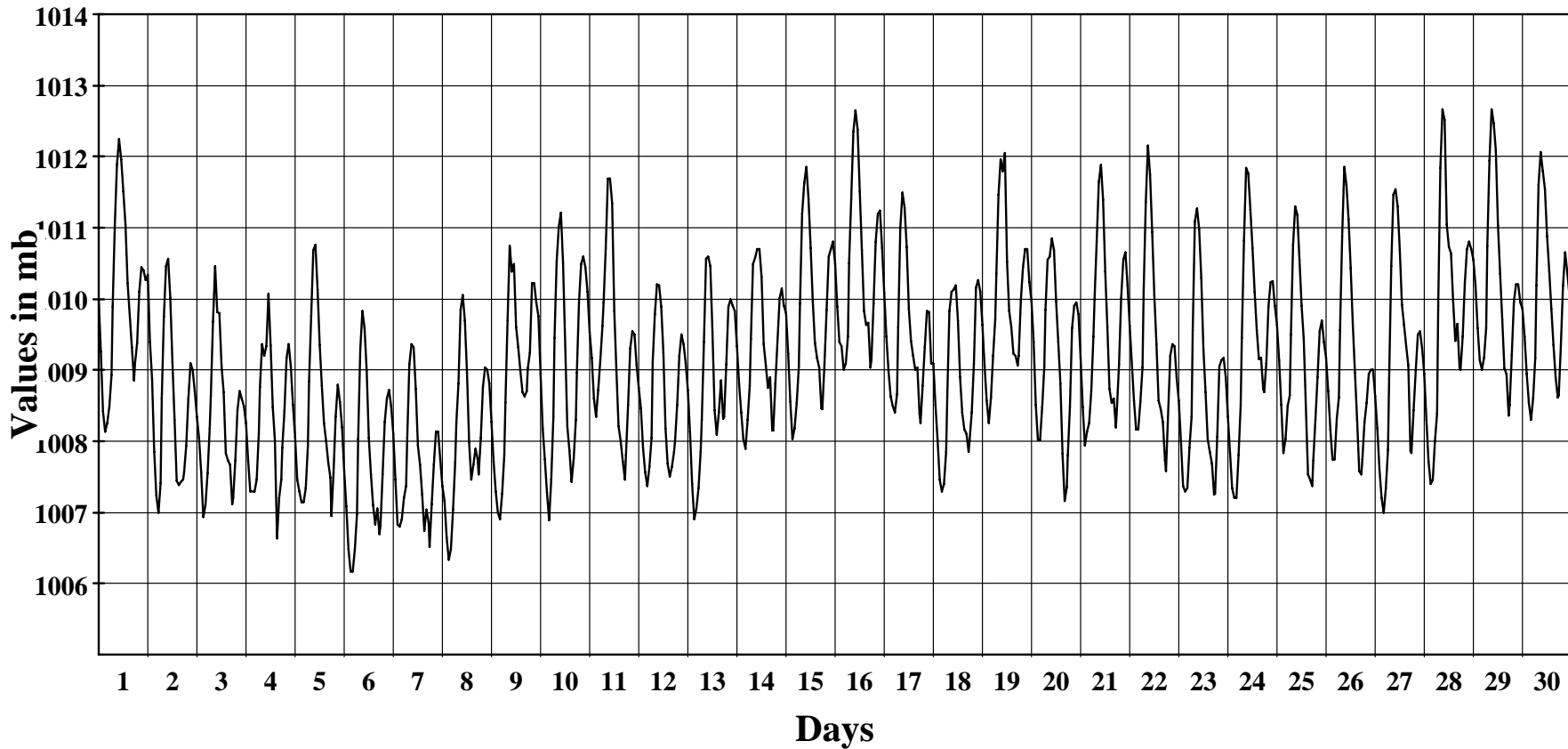
November 2012

Hourly Averages Graph (Pressure Sensor)

SITE 8207

Wotje

Average Hourly Values



Average Value: 1009.1

Site Information:

Project: Wind Monitoring
Location: NIHS Campus
Elevation: 5

Sensor on channel 11:

BP-20 Barom. mb
Height: 3 m
Serial #: SN:

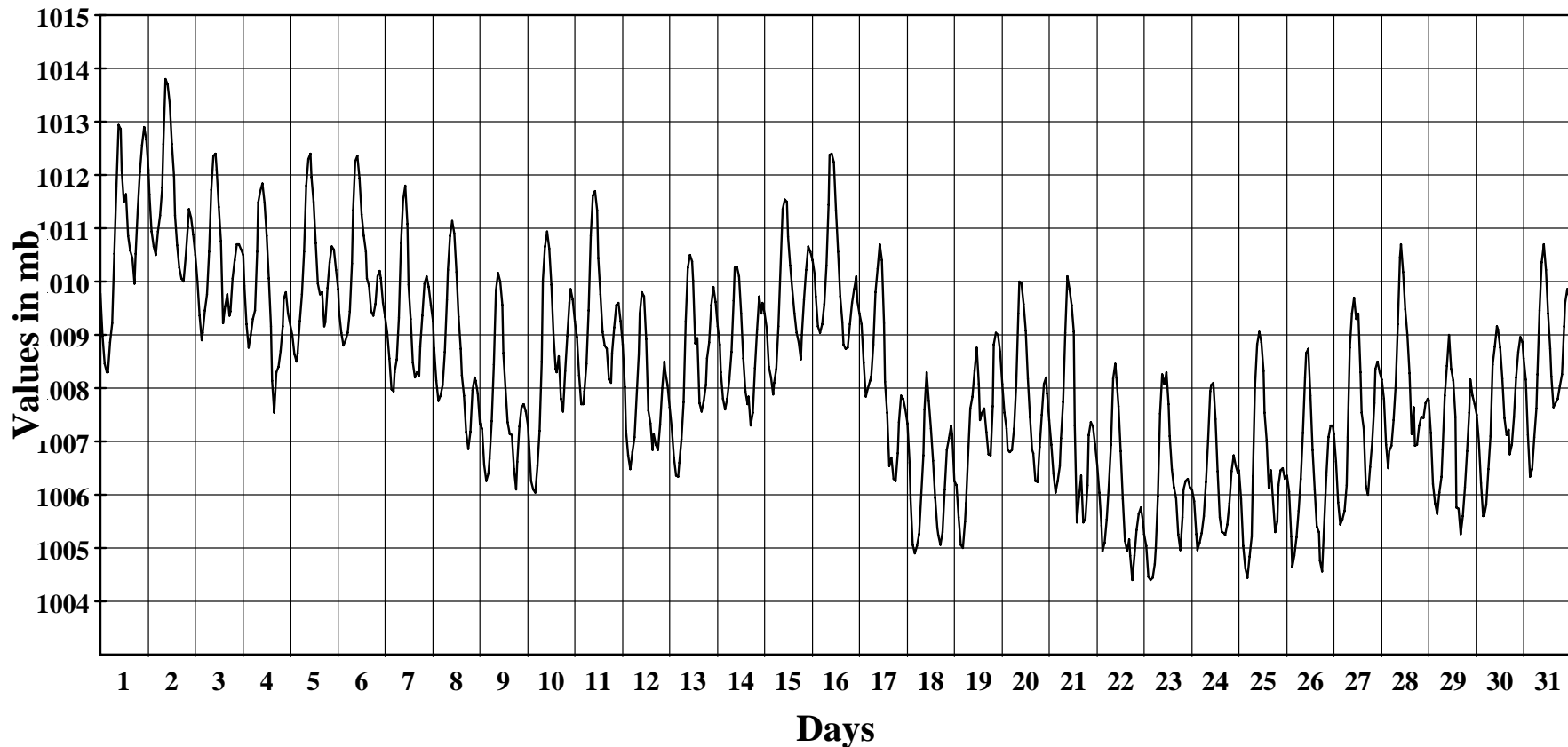
December 2012

Hourly Averages Graph (Pressure Sensor)

SITE 8207

Wotje

Average Hourly Values



Average Value: 1008.3

Site Information:

Project: Wind Monitoring
Location: NIHS Campus
Elevation: 5

Sensor on channel 11:

BP-20 Barom. mb
Height: 3 m
Serial #: SN:

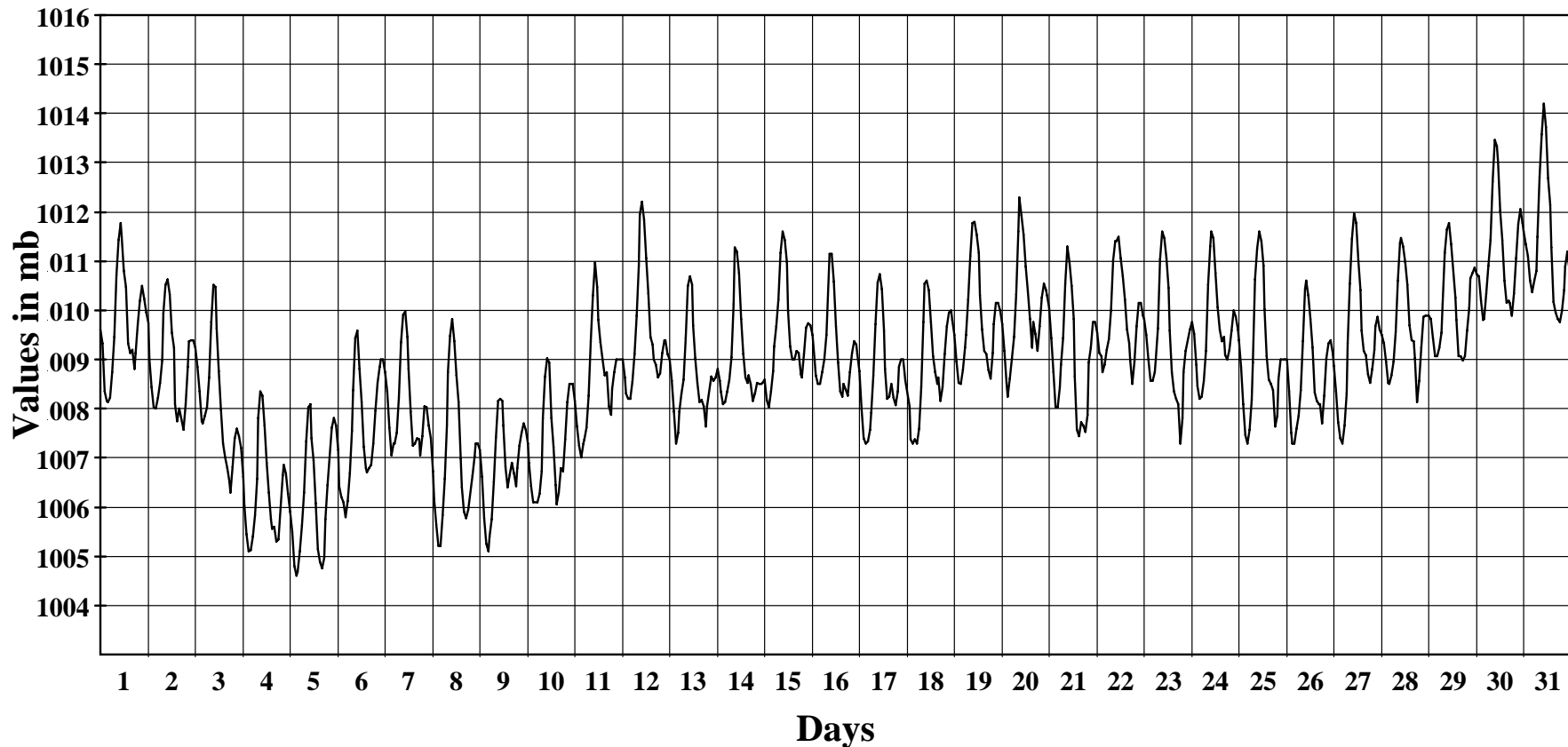
January 2013

Hourly Averages Graph (Pressure Sensor)

SITE 8207

Wotje

Average Hourly Values



Average Value: 1008.9

Site Information:

Project: Wind Monitoring
Location: NIHS Campus
Elevation: 5

Sensor on channel 11:

BP-20 Barom. mb
Height: 3 m
Serial #: SN:

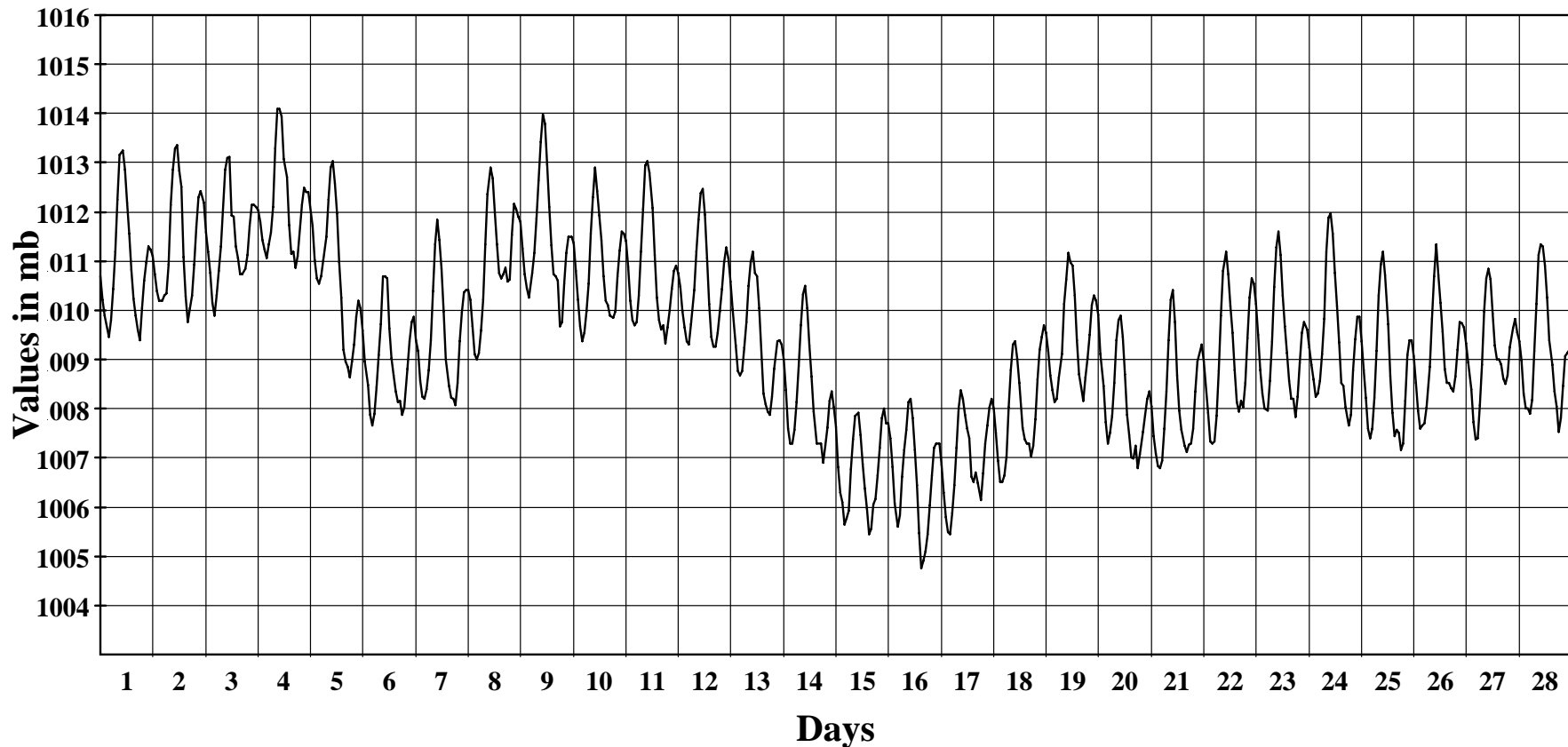
February 2013

Hourly Averages Graph (Pressure Sensor)

SITE 8207

Wotje

Average Hourly Values



Average Value: 1009.5

Site Information:

Project: Wind Monitoring
Location: NIHS Campus
Elevation: 5

Sensor on channel 11:

BP-20 Barom. mb
Height: 3 m
Serial #: SN:

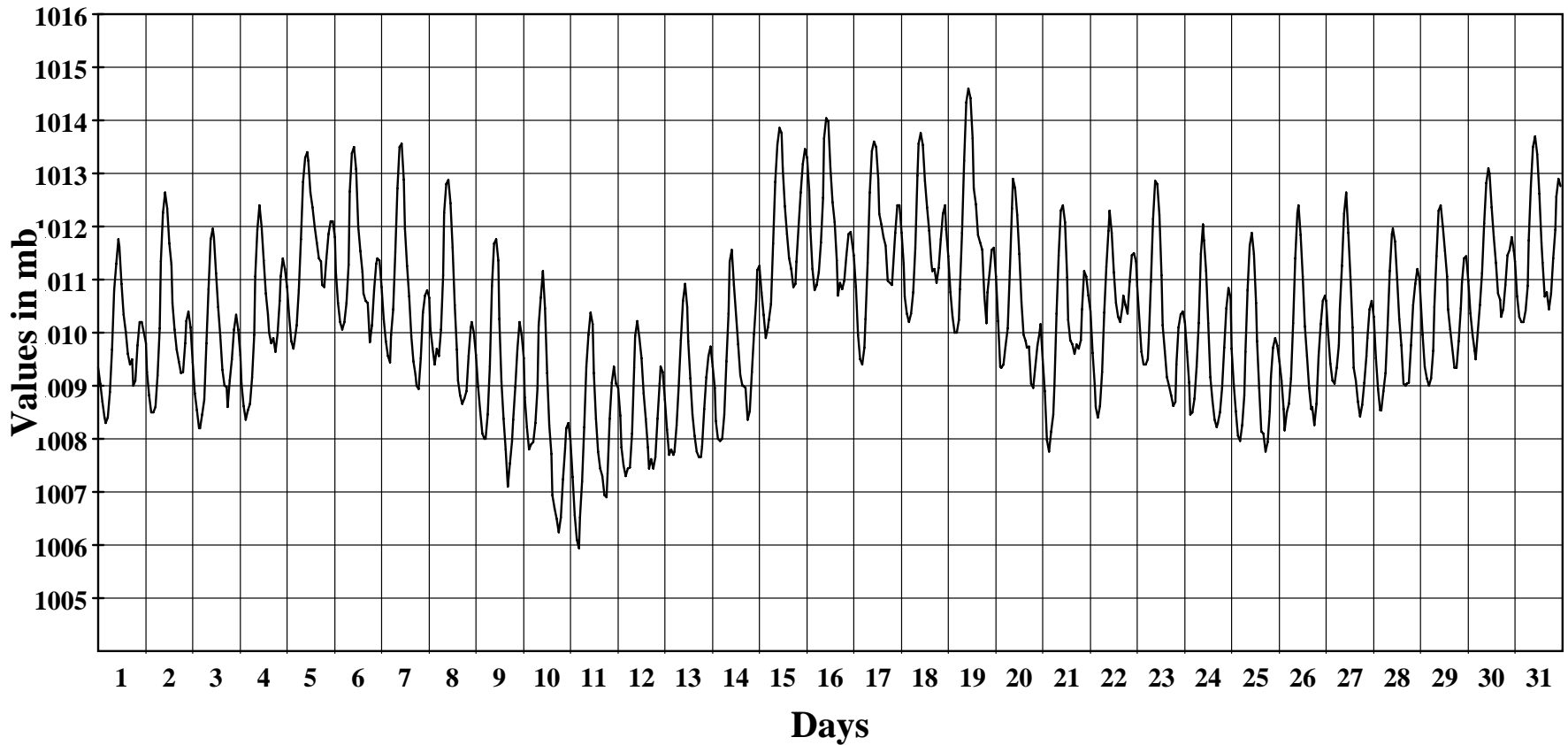
March 2013

Hourly Averages Graph (Pressure Sensor)

SITE 8207

Wotje

Average Hourly Values



Average Value: 1010.3

Site Information:

Project: Wind Monitoring
Location: NIHS Campus
Elevation: 5

Sensor on channel 11:

BP-20 Barom. mb
Height: 3 m
Serial #: SN:

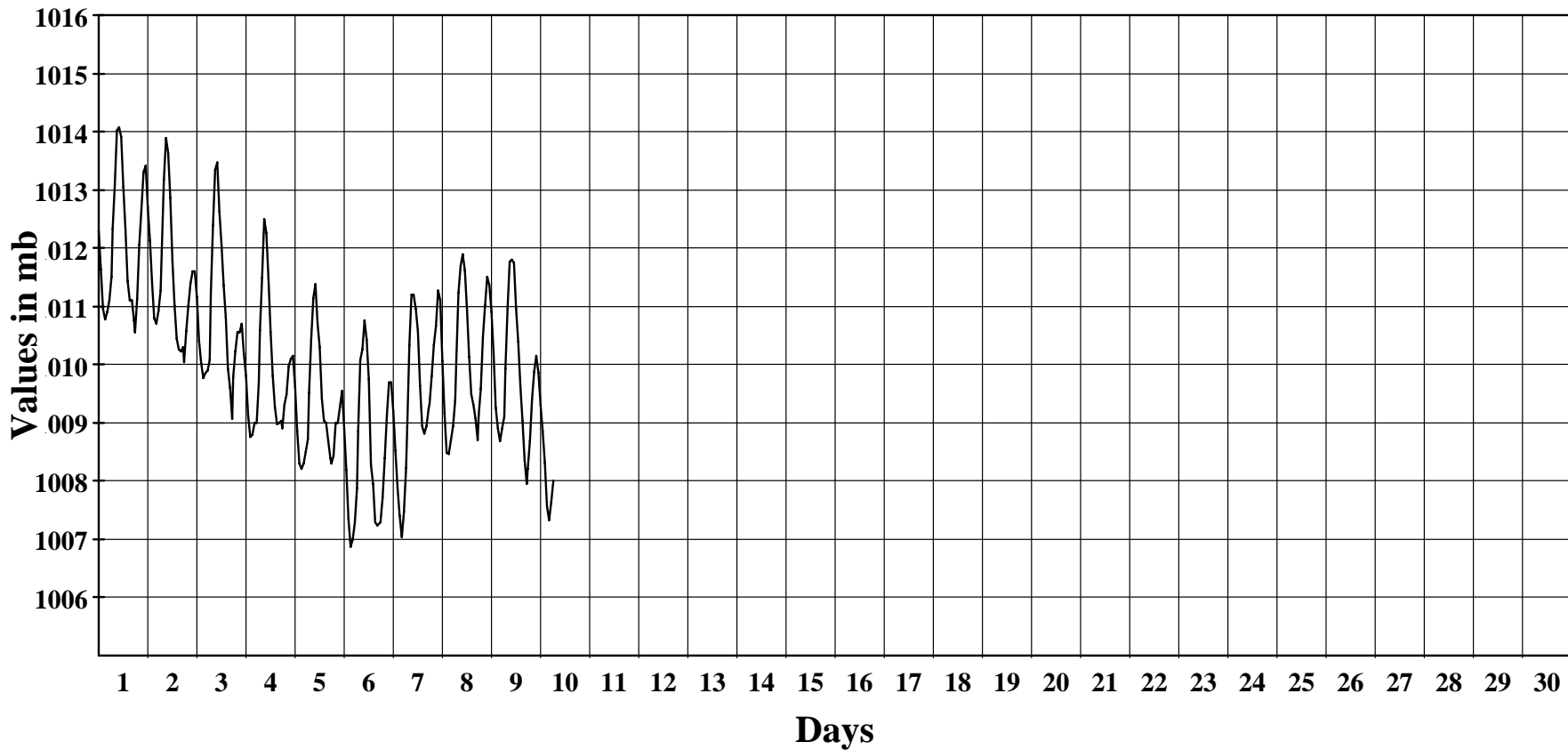
April 2013

Hourly Averages Graph (Pressure Sensor)

SITE 8207

Wotje

Average Hourly Values



Average Value: 1010.1